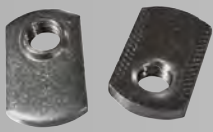


Weld Fasteners

Weld fasteners are ideal for demanding applications requiring threads. They can be utilized in light, medium or heavy industrial manufacturing to produce everything from trailers and conveyors to sub-assemblies, framework, weldments, architectural components, and more. Anything manufactured from steel or sheet metal is a potential application for weld fasteners.

JPSN, JPSNM, JPSNZ



JPND, JPNDM, JPNDZ



JPTP



JPXN, JPXNM



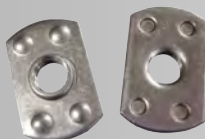
JPPN, JPPNM, JPPNZ



JPRN, JPRNM, JPRNZ



JPQN, JPQNZ



JPHS3, JPHL3, JPHS3Z



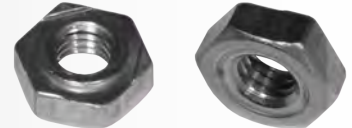
NON-LOCKING

JPHS3L, JPHL3L

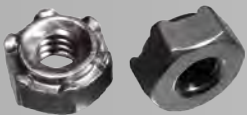


LOCKING

DIN 929 - Low Carbon & S.S.



JPHS6, JPHL6, JPHS6Z



JP 2004



JPWP



PILOTED

JPWS



NON-PILOTED

JPRD



WN, WNS



JPWT, JPWTZ



JPRH, JPRHM, JPRHZ



JPWF, JPWFM, JPWFZ



JPSF



JPWW, JPWWM, JPWWZ



JPR, JPBFS



JPR



JPR



JPBFS, JPBFS, JPS



JPGW, JPGWM, JPGWZ



JPHW, JPHWM, JPHWZ



JPSS, JPSSM, JPSSZ



JPDW



JPPD, JPPDZ



JPRW, JPRWM, JPRWZ



JKL



JPSP, JPSPZ



JPJD



JPPG, JPPGM, JPPGZ



JPPH, JPPHM, JPPHZ



SWCN



CDF



CDNF



CDF



CDNF



CDCS



CDTP



CDG



ASFT



ASPT



ACS



ASP



- Weld fasteners of all kinds, create a permanent bond with the workpiece after installation.
- CD studs can be used in situations where the finish opposite the welding side needs to remain blemish free.
- We stock weld fasteners for both rocker-arm or press type resistance welding systems.
- Thread masking available on request for most threaded fasteners.
- Thread locking features available.
- Custom plating options for unique specifications
- Available in low carbon mild steel, stainless steel and aluminum (CD weld fasteners only)

JHP Fasteners also specializes in the following categories. Please visit us on the web to see the complete line card or ask your sales representative for more details.

**Self-Clinching Fasteners
Rivet Nuts
Rivets**

**Electronic Fasteners
General/Special Application Fasteners
Tooling & Machinery for Installation**