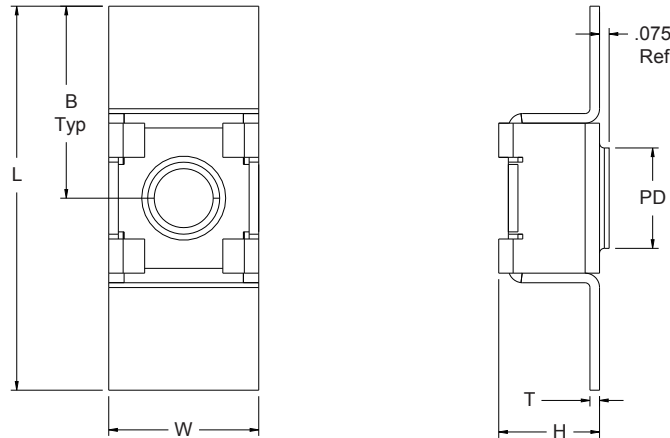




• SWCN offers a floating nut catering to assemblies where hole misalignment may occur.



Recommended Hole in Sheet Metal: PD + .006 (.15mm)

## SWCN SERIES

Interactive Spec Sheet. Click Part # for link to item on our webpage.

INCH									
Part Number	Thread Size	Nut Material	Retainer Material	L Length	B	W Width	PD Pilot Dia	T Thickness +/- .003	H Height +/- .030
08SWCNDXDX	8-32	Steel	Steel	1.500	0.750	0.500	0.313	0.042	0.350
10SWCNDXDX	10-24	Steel	Steel	1.500	0.750	0.500	0.313	0.042	0.350
11SWCNDXDX	10-32	Steel	Steel	1.500	0.750	0.500	0.313	0.042	0.350
14SWCNDXDX	1/4-20	Steel	Steel	1.750	0.875	0.563	0.398	0.050	0.440
15SWCNDXDX	1/4-28	Steel	Steel	1.750	0.875	0.563	0.398	0.500	0.440
31SWCNDXDX	5/16-18	Steel	Steel	2.000	1.000	0.781	0.523	0.050	0.520
32SWCNDXDX	5/16-24	Steel	Steel	2.000	1.000	0.781	0.523	0.050	0.520
37SWCNDXDX	3/8-16	Steel	Steel	2.000	1.000	0.781	0.523	0.050	0.520
38SWCNDXDX	3/8-24	Steel	Steel	2.000	1.000	0.781	0.523	0.050	0.520
50SWCNDXDX	1/2-13	Steel	Steel	2.250	1.125	0.938	0.750	0.050	0.790

METRIC									
Part Number	Thread Size	Nut Material	Retainer Material	L Length	B	W Width	PD Pilot Dia	T Thicknes +/- .08	H Height +/- .76
M06SWCNDXDX	M6x1.0	Steel	Steel	38.20	19.10	12.70	7.94	1.02	11.18
M08SWCNDXDX	M8x1.25	Steel	Steel	50.80	25.40	19.84	13.28	1.27	13.21
M10SWCNDXDX	M10x1.5	Steel	Steel	50.80	25.40	19.84	13.28	1.27	13.21

**Standard features:**

- Retainer made from C1008 - C1018 Low Carbon Steel
- Piloted Nut made from C1008 - C1010 Low Carbon Steel

**Special Application:**

- Nut Retainer available in Steel/Zinc or Aluminum, Minimums may apply
- Floating Nut available in Steel/Zinc or S.S., Minimums may apply



• SWCN is equally at home in industrial applications, appliances and furniture