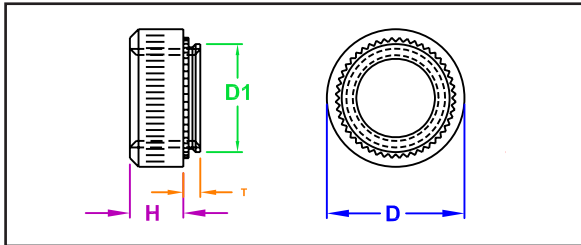


## SELF-CLINCHING NUTS FOR STAINLESS STEEL



**SERIES**  
Captive - CFSP  
PEM® - SP

JHP Fasteners - SSN



Manufactured by Captive Fastener Corp

**CFSP self-clinching nuts provide strong load-bearing threads in stainless sheet metal as thin as 0.030 inches (0.8mm)**

### INCH

All dimensions are in inches

Thread Size	Part Number	Minimum Mat'l Thick	T (max.)	Hole Size +.003/-.000	D1 (max.)	D (± 0.01")	H (± 0.01")	Min Dist to Edge
#4-40	CFSP440-0	.030-.039	0.030	0.166	0.165	0.250	0.070	0.190
	CFSP440-1	.040	0.038					
	CFSP440-2	.056	0.054					
#6-32	CFSP632-0	.030-.039	0.030	0.188	0.187	0.280	0.070	0.220
	CFSP632-1	.040	0.038					
	CFSP632-2	.056	0.054					
#8-32	CFSP832-0	.030-.039	0.030	0.213	0.212	0.310	0.090	0.270
	CFSP832-1	.040	0.038					
	CFSP832-2	.056	0.054					
#10-32	CFSP1032-0	.030-.039	0.030	0.250	0.249	0.340	0.090	0.280
	CFSP1032-1	.040	0.038					
	CFSP1032-2	.056	0.054					
1/4-20	CFSP420-1	.056	0.054	0.344	0.343	0.440	0.170	0.340
	CFSP420-2	.091	0.087					
Finish	Passivated							

### METRIC

All dimensions are in millimeters

Thread Size	Part Number	Minimum Mat'l Thick	T (max.)	Hole Size +.003/-.000	D1 (max.)	D (± 0.01)	H (± 0.01")	Min Dist to Edge
M3 X 0.5	CFSPM3-0	0.8-1	0.76	4.25	4.22	6.30	1.50	4.80
	CFSPM3-1	1.0	0.97					
	CFSPM3-2	1.4	1.37					
M4 X 0.7	CFSPM4-0	0.8-1	0.76	5.40	5.38	7.90	2	6.90
	CFSPM4-1	1.0	0.97					
	CFSPM4-2	1.4	1.37					
M5 X 0.8	CFSPM5-0	0.8-1	0.76	6.40	6.38	8.70	2	7.10
	CFSPM5-1	1.0	0.97					
	CFSPM5-2	1.4	1.37					
M6 X 1.0	CFSPM6-1	1.4	1.37	8.75	8.72	11.10	4.10	8.60
Finish	Passivated							

"PEM" is a registered trademark of Penn Engineering®. Captive Fastener Corporation parts are substitutes for the PEM part numbers in form, fit & function.

JHP Fasteners, Inc. 610 Maryland NE - Suite B Grand Rapids, MI 49505	Drawing No <b>SSN</b>	P - 800.783.0910 P - 616.913.0060 F - 616.913.0085
Scale <b>NTS</b>	Revision	Drawn by: <b>M McCormick</b>