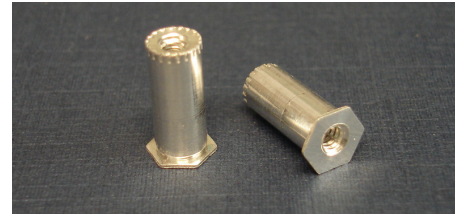


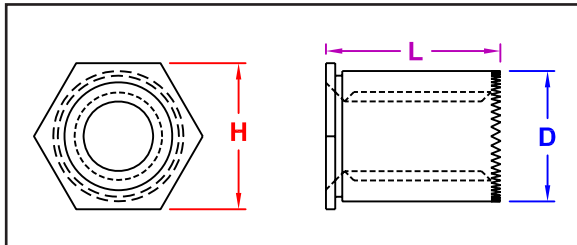
SERIES

Captive - CFSOAG / CFSOSG
 PEM® - SOAG / SOSG
 JHP Fasteners - SOG

SELF-GROUNDING STANDOFFS



Manufactured by Captive Fastener Corp



CFSOAG & CFSOSG self-grounding standoffs are designed to be installed in steel and aluminum chasis to ground PC boards. Projecting teeth assure excellent electrical contact with PC board circuit and eliminate need for serrated or star washers.

INCH

Part Number		All Dimension are in inches										Hole Size +0.003 -0.000	D +0.005 -0.000	H Nom	Min Distance to Edge	Min Mat'l Thick
Thread Size	Stainless Steel	Aluminum	L Length +0.010 in. / -0.000 in.													
Finish	Passivated	Plain	0.125	0.187	0.250	0.312	0.375	0.437	0.500							
#4-40	CFSOSG6440	CFSOAG6440	±4	-6	-8	-10	-12	-14	-16		0.213	0.212	0.250	0.27	0.04	
#6-32	CFSOSG8632	CFSOAG8632	±4	±6	-8	-10	-12	-14	-16		0.281	0.280	0.312	0.31	0.04	

METRIC

Part Number		All Dimension are in millimeters										Hole Size +0.08 -0.00	D +0.00 -0.13	H Nom	Min Distance to Edge	Min Mat'l Thick
Thread Size	Stainless Steel	Aluminum	L Length +0.25 / -0.00mm													
Finish	Passivated	Plain	3	4	6	8	10	12	14							
M3 X 0.5	CFSOSG3.5M3	CFSOAG3.5M3	-3	-4	-6	-8	-10	-12	-14		5.4	5.38	6.4	6.86	1.0	
M4 X 0.7	CFSOSGM4	CFSOAGM4	-3	-4	-6	-8	-10	-12	-14		7.2	7.11	7.9	7.87	1.0	

"PEM" is a registered trademark of Penn Engineering®. Captive Fastener Corporation parts are substitutes for the PEM part numbers in form, fit & function.

JHP Fasteners, Inc. 610 Maryland NE - Suite B Grand Rapids, MI 49505	Drawing No SOG	P - 800.783.0910 P - 616.913.0060 F - 616.913.0085
Scale NTS	Revision	Drawn by: M McCormick