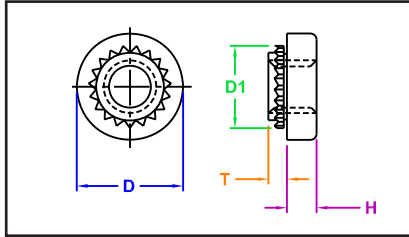




BROACHING-TYPE NUTS



SERIES
 Captive - CKF2 / CKFS2
 PEM® - KF2 / KFS2
 JHP Fasteners - SKF



Manufactured by Captive Fastener Corp

CKF2 & CKFS2 broaching-type nuts are designed for use on printed circuit boards and on most brittle or hard materials: glass laminates, epoxy or resin with paper, nylon or canvas bases. They are also used on materials too thin or unsuitable for threading, such as acrylic and polycarbonate panels.

INCH

All dimensions are in inches

Thread Size	Carbon Steel	Stainless Steel	Minimum Mat'l Thick	Hole Size +.003 -.000	D1 ±.003	D ± 0.005	H ± 0.005	Min Dist to Edge
#2-56	CKF2256	CKFS2256	0.060	0.147	0.165	0.219	0.065	0.16
#4-40	CKF2440	CKFS2440	0.060	0.166	0.184	0.219	0.065	0.17
#6-32	CKF2632	CKFS2632	0.060	0.213	0.231	0.281	0.065	0.22
#8-32	CKF2832	CKFS2832	0.060	0.250	0.268	0.344	0.096	0.25
#10-24	CKF21024	CKFS21024	0.060	0.272	0.290	0.375	0.127	0.28
#10-32	CKF21032	CKFS21032	0.060	0.272	0.290	0.375	0.127	0.28

METRIC

All dimensions are in millimeters

Thread Size	Carbon Steel	Stainless Steel	Minimum Mat'l Thick	Hole Size +.08 -.00	D1 ±.08	D ± 0.13	H ± 0.13	Min Dist to Edge
M2 X 0.45	CKF2M2	CKFS2M2	1.5	3.7	4.19	5.56	1.5	4.2
M2.5 X 0.45	CKF2M2.5	CKFS2M2.5	1.5	4.2	4.68	5.56	1.5	4.5
M3 X 0.5	CKF2M3	CKFS2M3	1.5	4.2	4.68	5.56	1.5	4.5
M4 X 0.7	CKF2M4	CKFS2M4	1.5	6.4	6.82	8.74	2.0	6.4
M5 X 0.8	CKF2M5	CKFS2M5	1.5	6.9	7.37	9.53	3.0	7.1

"PEM" is a registered trademark of Penn Engineering®. Captive Fastener Corporation parts are substitutes for the PEM part numbers in form, fit & function.

JHP Fasteners, Inc. 3721 Northridge Dr NW - Suite 40 Walker, MI 49544	Drawing No	P - 800.783.0910 P - 616.784.7900 F - 616.913.0085
	Scale NTS	Revision A