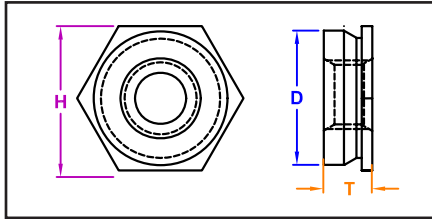
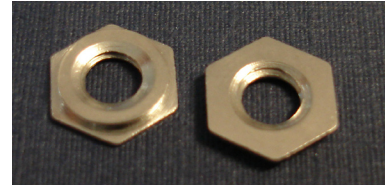


JHP FASTENERS, INC

SELF-CLINCHING FLUSH NUTS



SERIES
Captive - CFL
PEM® - F
JHP Fasteners - SF



Manufactured by Captive Fastener Corp

CFL flush nuts offer the advantage of being completely flush within the sheet while providing load-bearing threads in materials too ductile to tap. Captive Fastener flush nuts fit standard sizes and are otherwise dimensionally identical to industry standards.

INCH

All dimensions are in inches							
Thread Size	Part Number	T (max)	Minimum Mat'l Thick	Hole Size +.003/-0.000	D (max)	H Nom.	Min Dist to Edge
#2-56	CFL256-1	0.60	0.061	0.172	0.171	0.188	0.23
	CFL256-2	0.90	0.091				
#4-40	CFL440-1	0.60	0.061	0.172	0.171	0.188	0.23
	CFL440-2	0.90	0.091				
#6-32	CFL632-1	0.60	0.061	0.213	0.212	0.250	0.27
	CFL632-2	0.90	0.091				
#8-32	CFL832-1	0.60	0.061	0.29	0.289	0.313	0.28
	CFL832-2	0.90	0.091				
#10-24	CFL1024-1	0.60	0.061	0.312	0.311	0.344	0.31
	CFL1024-2	0.90	0.091				
#10-32	CFL1032-1	0.60	0.061	0.312	0.311	0.344	0.31
	CFL1032-2	0.90	0.091				
1/4-20	CFL420-3	0.120	0.126	0.344	0.343	0.375	0.34
	CFL420-4	0.151	0.156				
	CFL420-5	0.182	0.187				
1/4-28	CFL428-3	0.120	0.126	0.344	0.343	0.375	0.34
	CFL428-4	0.151	0.156				
	CFL428-5	0.182	0.187				

METRIC

All dimensions are in millimeters							
Thread Size	Part Number	T (max)	Minimum Mat'l Thick	Hole Size +.08/-0.00	D (max)	H Nom.	Min Dist to Edge
M2 X 0.5	CFLM2-1	1.50	1.50	4.40	4.34	4.80	6.00
	CFLM2-2	2.30	2.30				
M2.5 X 0.5	CFLM2.5-1	1.50	1.50	4.40	4.34	4.80	6.00
	CFLM2.5-2	2.30	2.30				
M3 X 0.5	CFLM3-1	1.50	1.50	4.40	4.34	4.80	6.00
	CFLM3-2	2.30	2.30				
M3.5 X 0.5	CFL3.5-1	1.50	1.50	5.40	5.35	6.40	6.50
	CFL3.5-2	2.30	2.30				
M4 X 0.7	CFLM4-1	1.50	1.50	7.40	7.34	7.94	7.20
	CFLM4-2	2.30	2.30				
M5 X 0.8	CFLM5-1	1.50	1.50	7.90	7.87	8.73	8.00
	CFLM5-2	2.30	2.30				
M6 X 1.0	CFLM6-3	3.10	3.20	8.75	8.71	9.53	8.80
	CFLM6-4	3.90	4.00				
	CFLM6-5	4.70	4.75				

"PEM" is a registered trademark of Penn Engineering®. Captive Fastener Corporation parts are substitutes for the PEM part numbers in form, fit & function.

JHP Fasteners, Inc.
 610 Maryland NE - Suite B
 Grand Rapids, MI 49505

Drawing No

SF

P - 800.783.0910
 P - 616.913.0060
 F - 616.913.0085

Scale

NTS

Revision

Drawn by:

M McCormick