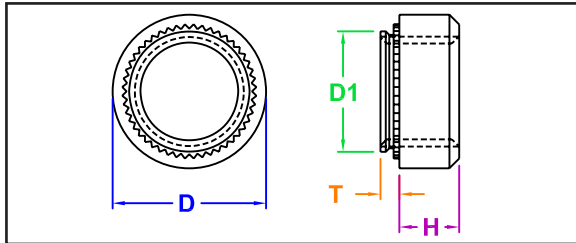


SELF-CLINCHING NUTS

SERIES

Captive - C / CS
 PEM® - S / SS / CLS / CLSS
 JHP Fasteners - SCL



Manufactured by Captive Fastener Corp

C & CS self-clinching nuts provide strong load-bearing threads in sheet metal and other thin section assemblies. C & CS nuts meet specification features of MIL-N-45938/1.

INCH

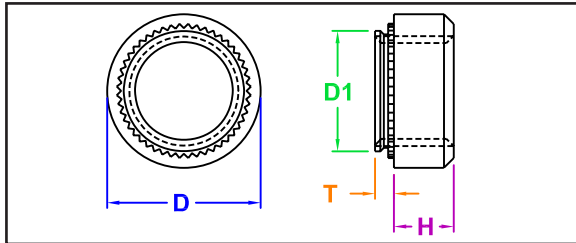
Thread Size	Part Number		All dimensions are in inches						
	Carbon Steel	Stainless Steel	T (max.)	Minimum Mat'l Thick	Hole Size +.003/-0.000	D1 (max.)	D (± 0.01")	H (± 0.01")	Min Dist to Edge
#2-56	C256-0	CS256-0	0.030	0.030	0.166	0.165	0.250	0.070	0.190
	C256-1	CS256-1	0.038	0.040					
	C256-2	CS256-2	0.054	0.056					
	C256-3	CS256-3	0.087	0.091					
#3-48	C348-0	CS348-0	0.030	0.030	0.166	0.165	0.250	0.070	0.190
	C348-1	CS348-1	0.038	0.040					
	C348-2	CS348-2	0.054	0.056					
	C348-3	CS348-3	0.087	0.091					
#4-40	C440-0	CS440-0	0.030	0.030	0.166	0.165	0.250	0.070	0.190
	C440-1	CS440-1	0.038	0.040					
	C440-2	CS440-2	0.054	0.056					
	C440-3	CS440-3	0.087	0.091					
#6-32	C632-0	CS632-0	0.030	0.030	0.188	0.187	0.281	0.070	0.220
	C632-1	CS632-1	0.038	0.040					
	C632-2	CS632-2	0.054	0.056					
	C632-3	CS632-3	0.087	0.091					
#8-32	C832-0	CS832-0	0.030	0.030	0.213	0.212	0.312	0.090	0.270
	C832-1	CS832-1	0.038	0.040					
	C832-2	CS832-2	0.054	0.056					
	C832-3	CS832-3	0.087	0.091					
#10-24	C1024-0	CS1024-0	0.030	0.030	0.250	0.249	0.344	0.090	0.280
	C1024-1	CS1024-1	0.038	0.040					
	C1024-2	CS1024-2	0.054	0.056					
	C1024-3	CS1024-3	0.087	0.091					
#10-32	C1032-0	CS1032-0	0.030	0.030	0.250	0.249	0.344	0.090	0.280
	C1032-1	CS1032-1	0.038	0.040					
	C1032-2	CS1032-2	0.054	0.056					
	C1032-3	CS1032-3	0.087	0.091					
Finish	Zinc Clear	Passivated							

Continued on Next Page

"PEM" is a registered trademark of Penn Engineering®. Captive Fastener Corporation parts are substitutes for the PEM part numbers in form, fit & function.

JHP Fasteners, Inc. 610 Maryland NE - Suite B Grand Rapids, MI 49505	Drawing No C-1	P - 800.783.0910 P - 616.913.0060 F - 616.913.0085
Scale NTS	Revision	Drawn by: M McCormick

SELF-CLINCHING NUTS



SERIES
 Captive - C / CS
 PEM® - S / SS / CLS / CLSS
 JHP Fasteners - SCL



Manufactured by Captive Fastener Corp

C & CS self-clinching nuts provide strong load-bearing threads in sheet metal and other thin section assemblies. C & CS nuts meet specification features of MIL-N-45938/1.

METRIC

Thread Size	Part Number		All dimensions are in millimeters						
	Carbon Steel	Stainless Steel	T (max.)	Minimum Mat'l Thick	Hole Size +.003/-.000	D1 (max.)	D (±0.01")	H (±0.01")	Min Dist to Edge
M2 X 0.04	CM2-0	CSM2-0	0.76	0.80	4.25	4.22	6.30	1.50	4.80
	CM2-1	CSM2-1	0.97	1.00					
	CM2-2	CSM2-2	1.37	1.40					
	CM2-3	CSM2-3	2.21	2.30					
M2.5 X 0.45	CM2.5-0	CSM2.5-0	0.76	0.80	4.25	4.22	6.30	1.50	4.80
	CM2.5-1	CSM2.5-1	0.97	1.00					
	CM2.5-2	CSM2.5-2	1.37	1.40					
	CM2.5-3	CSM2.5-3	2.21	2.30					
M3 X 0.5	CM3-0	CSM3-0	0.76	0.80	4.25	4.22	6.30	1.50	4.80
	CM3-1	CSM3-1	0.97	1.00					
	CM3-2	CSM3-2	1.37	1.40					
	CM3-3	CSM3-3	2.21	2.30					
M3.5 X 0.6	CM3.5-0	CSM3.5-0	0.76	0.80	4.75	4.73	7.10	1.50	5.60
	CM3.5-1	CSM3.5-1	0.97	1.00					
	CM3.5-2	CSM3.5-2	1.37	1.40					
	CM3.5-3	CSM3.5-3	2.21	2.30					
M4 X 0.7	CM4-0	CSM4-0	0.76	0.80	5.40	5.38	7.90	2.00	6.90
	CM4-1	CSM4-1	0.97	1.00					
	CM4-2	CSM4-2	1.37	1.40					
	CM4-3	CSM4-3	2.21	2.30					
M5 X 0.8	CM5-0	CSM5-0	0.76	0.80	6.40	6.38	8.70	2.00	7.10
	CM5-1	CSM5-1	0.97	1.00					
	CM5-2	CSM5-2	1.37	1.40					
	CM5-3	CSM5-3	2.21	2.30					
M6 X 1.0	CM6-1	CSM6-1	1.37	1.40	8.75	8.72	11.05	4.08	8.60
	CM6-2	CSM6-2	2.21	2.30					
	† CM6-3	CSM6-3	3.05	3.20					
M8 X 1.25	CM8-1	CSM8-1	1.37	1.40	10.50	10.44	12.65	5.47	9.70
	CM8-2	CSM8-2	2.21	2.30					
	† CM8-3	CSM8-3	3.05	3.20					
M10 X 1.5	CM10-1	CSM10-1	2.21	2.30	14.00	13.94	17.35	7.48	13.50
	CM10-2	CSM10-2	3.05	3.20					
	† CM10-3	† CSM10-3	6.00	6.40					
Finish	Zinc Clear	Passivated	† Not stocked - available upon special order.						

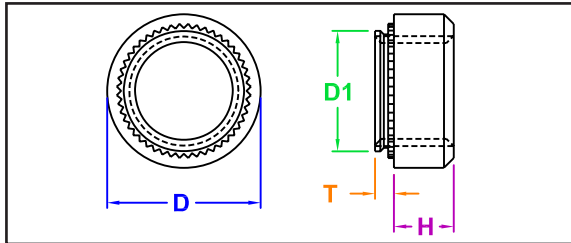
"PEM" is a registered trademark of Penn Engineering®. Captive Fastener Corporation parts are substitutes for the PEM part numbers in form, fit & function.

JHP Fasteners, Inc. 610 Maryland NE - Suite B Grand Rapids, MI 49505	Drawing No C-3	P - 800.783.0910 P - 616.913.0060 F - 616.913.0085
Scale NTS	Revision	Drawn by: M McCormick

SELF-CLINCHING NUTS

SERIES

Captive - C / CS
 PEM® - S / SS / CLS / CLSS
 JHP Fasteners - SCL



Manufactured by Captive Fastener Corp

C & CS self-clinching nuts provide strong load-bearing threads in sheet and other thin section assemblies. C & CS nuts meet specification features of MIL-N-45938/1.

INCH

Thread Size	Part Number		All dimensions are in inches						
	Carbon Steel	Stainless Steel	T (max.)	Minimum Mat'l Thick	Hole Size +.003/-.000	D1 (max.)	D (± 0.01")	H (± 0.01")	Min Dist to Edge
#12-24	C1224-1	CS1224-1	0.038	0.040	0.277	0.276	0.380	0.130	0.310
	C1224-2	CS1224-2	0.054	0.056					
	C1224-3	CS1224-3	0.087	0.091					
1/4-20	C420-1	CS420-1	0.054	0.056	0.344	0.343	0.437	0.170	0.340
	C420-2	CS420-2	0.087	0.091					
	C420-3	CS420-3	0.120	0.125					
1/4-28	C428-1	CS428-1	0.054	0.056	0.344	0.343	0.437	0.170	0.340
	C428-2	CS428-2	0.087	0.091					
	C428-3	CS428-3	0.120	0.125					
5/16-18	C518-1	CS518-1	0.054	0.056	0.413	0.412	0.500	0.230	0.380
	C518-2	CS518-2	0.087	0.091					
	C518-3	CS518-3	0.120	0.125					
5/16-24	C524-1	CS524-1	0.054	0.056	0.413	0.412	0.500	0.230	0.380
	C524-2	CS524-2	0.087	0.091					
	C524-3	CS524-3	0.120	0.125					
3/8-16	C616-1	CS616-1	0.087	0.091	0.500	0.499	0.562	0.270	0.440
	C616-2	CS616-2	0.120	0.125					
	C616-3	CS616-3	0.235	0.250					
3/8-24	C624-1	CS624-1	0.087	0.091	0.500	0.499	0.562	0.270	0.440
	C624-2	CS624-2	0.120	0.125					
	C624-3	CS624-3	0.235	0.250					
1/2-13	C813-1	CS813-1	0.120	0.125	0.656	0.655	0.810	0.360	0.630
	C813-2	CS813-2	0.235	0.250					
Finish	Zinc Clear	Passivated							

Continued on Next Page

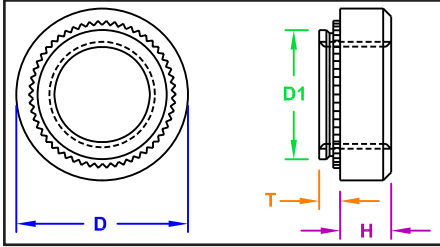
"PEM" is a registered trademark of Penn Engineering®. Captive Fastener Corporation parts are substitutes for the PEM part numbers in form, fit & function.

JHP Fasteners, Inc. 610 Maryland NE - Suite B Grand Rapids, MI 49505	Drawing No C-2	P - 800.783.0910 P - 616.913.0060 F - 616.913.0085
Scale NTS	Revision	Drawn by: M McCormick

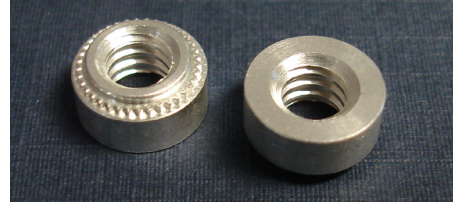
JHP FASTENERS, INC

SELF-CLINCHING NUTS

SERIES
Captive - CA
PEM® - CLA
JHP Fasteners - SCL



CA - aluminum self-clinching nuts provide strong load-bearing threads. All Captive Fastener self-clinching nuts fit standard hole sizes and are dimensionally identical to industry standards.



Manufactured by Captive Fastener Corp

INCH

All dimensions are in inches

Thread Size	Part Number	T (max.)	Minimum Mat'l Thick	Hole Size +.003/-.000	D1 (max.)	D ± 0.01	H ± 0.01	Min Dist to Edge
#2-56	CA256-1	0.038	0.040	0.166	0.165	0.25	0.07	0.19
	CA256-2	0.054	0.056					
#4-40	CA440-1	0.038	0.040	0.188	0.187	0.25	0.09	0.22
	CA440-2	0.054	0.056					
#6-32	CA632-1	0.038	0.040	0.213	0.212	0.28	0.09	0.27
	CA632-2	0.054	0.056					
#8-32	CA832-1	0.038	0.040	0.234	0.233	0.31	0.13	0.28
	CA832-2	0.054	0.056					
#10-24	CA1024-1	0.038	0.040	0.296	0.295	0.38	0.16	0.31
	CA1024-2	0.054	0.056					
#10-32	CA1032-1	0.038	0.040	0.344	0.343	0.44	0.17	0.34
	CA1032-2	0.054	0.056					
1/4-20	CA420-1	0.054	0.056	0.344	0.343	0.44	0.17	0.34
	CA420-2	0.087	0.091					
	CA420-3	0.120	0.125					

METRIC

All dimensions are in millimeters

Thread Size	Part Number	T (max.)	Minimum Mat'l Thick	Hole Size +.08/-.00	D1 (max.)	D ± 0.25	H ± 0.25	Min Dist to Edge
M2 X 0.4	CAM2-1	0.97	1.0	4.25	4.22	6.30	1.50	4.80
	CAM2-2	1.37	1.4					
M3 X 0.5	CAM3-1	0.97	1.0	4.75	4.73	6.30	2.00	5.60
	CAM3-2	1.37	1.4					
M3.5 X 0.6	CAM3.5-1	0.97	1.0	5.40	5.38	7.10	2.00	6.90
	CAM3.5-2	1.37	1.4					
M4 X 0.7	CAM4-1	0.97	1.0	6.00	5.97	7.90	3.00	7.10
	CAM4-2	1.37	1.4					
M5 X 0.8	CAM5-1	0.97	1.0	7.50	7.47	9.50	3.80	7.90
	CAM5-2	1.37	1.4					
M6 X 1.0	CAM6-1	1.37	1.4	8.75	8.72	11.10	4.10	8.60
	CAM6-2	2.21	2.3					

"PEM" is a registered trademark of Penn Engineering®. Captive Fastener Corporation parts are substitutes for the PEM part numbers in form, fit & function.

JHP Fasteners, Inc. 610 Maryland NE - Suite B Grand Rapids, MI 49505	Drawing No SCL-A	P - 800.783.0910 P - 616.913.0060 F - 616.913.0085
Scale NTS	Revision	Drawn by: M McCormick