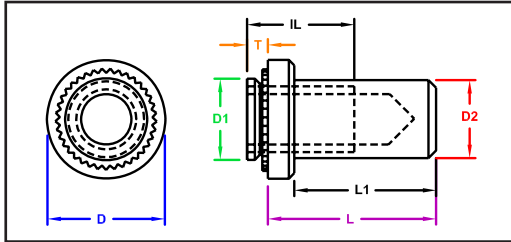


BLIND PRESS NUTS



SERIES
Captive - CFB / CFBS
PEM® - B / BS
JHP Fasteners - SB



Manufactured by Captive Fastener Corp

CFB & CFBS blind, sealed-thread, press nuts are designed to provide extended thread lengths in thin sheet metal. Press nuts provide a seal against the entrance of dirt, oils, moisture and corrosive atmospheres. They are usually more economical to use than nut and screw-type hardware that require elaborate seals and special assembly procedures.

INCH

Part Number		All dimensions are in inches										
Thread Size	Carbon Steel	Stainless Steel	D2 (max)	Minimum Mat'l Thick	Hole Size +.003/-.000 inches	D1 (max)	L1 (max)	T (Max)	D ± 0.01"	L ± 0.01"	Min Dist to Edge	IL Full Thread Min. Depth
#4-40	CFB440-1	CFBS440-1	0.149	0.040	0.166	0.165	0.335	0.038	0.25	0.38	0.19	0.21
	CFB440-2	CFBS440-2		0.056				0.054				
#6-32	CFB632-1	CFBS632-1	0.169	0.040	0.187	0.186	0.335	0.038	0.28	0.38	0.22	0.23
	CFB632-2	CFBS632-2		0.056				0.054				
#8-32	CFB832-1	CFBS832-1	0.204	0.040	0.213	0.212	0.385	0.038	0.31	0.44	0.27	0.28
	CFB832-2	CFBS832-2		0.056				0.054				
#10-32	CFB1032-1	CFBS1032-1	0.235	0.040	0.250	0.249	0.385	0.038	0.34	0.44	0.28	0.28
	CFB1032-2	CFBS1032-2		0.056				0.054				
1/4-20	CFB420-1	CFBS420-1	0.305	0.056	0.344	0.343	0.500	0.054	0.43	0.56	0.34	0.31
	CFB420-2	CFBS420-2		0.090				0.087				
Finish	Zinc Clear	Passivated										

METRIC

Part Number		All dimensions are in millimeters										
Thread Size	Carbon Steel	Stainless Steel	D2 (max)	Minimum Mat'l Thick	Hole Size +.08/-.00mm	D1 (max)	L1 (max)	T (Max)	D ±.25 mm	L ±.25 mm	Min Dist to Edge	IL Full Thread Min. Depth
M3 X 0.5	CFBM3-1	CFBMS3-1	3.80	1.0	4.25	4.22	8.50	0.97	6.35	9.60	4.80	5.30
	CFBM3-2	CFBMS3-2		1.4				1.37				
M4 X 0.7	CFBM4-1	CFBMS4-1	5.20	1.0	5.40	5.38	9.80	0.97	7.95	11.20	6.90	7.10
	CFBM4-2	CFBMS4-2		1.4				1.37				
M5 X 0.8	CFBM5-1	CFBMS5-1	6.00	1.0	6.40	6.38	9.80	0.97	8.75	11.20	7.10	7.10
	CFBM5-2	CFBMS5-2		1.4				1.37				
M6 X 1.0	CFBM6-1	CFBMS6-1	7.80	1.4	8.75	8.72	12.70	1.37	11.10	14.30	8.60	7.80
	CFBM6-2	CFBMS6-2		2.3				2.21				
Finish	Zinc Clear	Passivated										

"PEM" is a registered trademark of Penn Engineering®. Captive Fastener Corporation parts are substitutes for the PEM part numbers in form, fit & function.

JHP Fasteners, Inc. 610 Maryland NE - Suite B Grand Rapids, MI 49505	Drawing No SB	P - 800.783.0910 P - 616.913.0060 F - 616.913.0085
Scale NTS	Revision	Drawn by: M McCormick