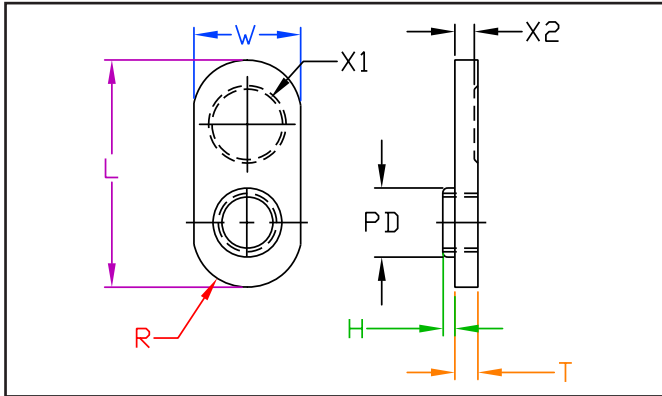


JHP FASTENERS, INC.

SINGLE TAB SPOT-WELD NUT

SERIES

JPXN INCH STEEL / PLAIN



JPXN Series - Precision piloted spot-weld nut which has an electrode target area with a reduced thickness for welding to lighter material. Made from a high-welding quality low carbon steel.

| Part Number | Size | Width W | Length L | Thickness T | Pilot | | Target Area | | Ctr. Of Hole to Edge of Nut R | Hole in Sheet |
|-------------|---------|---------|----------|-------------|-------------|----------|-------------|--------------|-------------------------------|---------------|
| | | | | | Diameter PD | Height H | Diameter X1 | Thickness X2 | | |
| JPXN 1101 | #6-32 | 0.390 | 0.734 | 0.097 | 0.198 | 0.03 | 0.265 | 0.085 | 0.208 | 0.203 |
| | | 0.370 | 0.704 | 0.091 | 0.178 | | 0.235 | 0.075 | 0.168 | |
| JPXN 1401 | #8-32 | 0.390 | 0.734 | 0.097 | 0.213 | 0.03 | 0.265 | 0.085 | 0.208 | 0.219 |
| | | 0.370 | 0.704 | 0.091 | 0.193 | | 0.235 | 0.075 | 0.168 | |
| JPXN 1513 | #10-24 | 0.453 | 0.827 | 0.097 | 0.244 | 0.03 | 0.296 | 0.085 | 0.208 | 0.250 |
| | | 0.433 | 0.797 | 0.091 | 0.224 | | 0.266 | 0.075 | 0.168 | |
| JPXN 1713 | #10-32 | 0.453 | 0.827 | 0.097 | 0.244 | 0.03 | 0.296 | 0.085 | 0.208 | 0.250 |
| | | 0.433 | 0.797 | 0.091 | 0.224 | | 0.266 | 0.075 | 0.168 | |
| JPXN 2115 | 1/4-20 | 0.448 | 0.953 | 0.097 | 0.291 | 0.038 | 0.296 | 0.081 | 0.270 | 0.297 |
| | | 0.428 | 0.923 | 0.091 | 0.271 | | 0.266 | 0.075 | 0.230 | |
| JPXN 2115-1 | 1/4-20 | 0.448 | 0.953 | 0.097 | 0.307 | 0.05 | 0.296 | 0.085 | 0.270 | 0.312 |
| | | 0.428 | 0.923 | 0.091 | 0.271 | | 0.266 | 0.075 | 0.230 | |
| JPXN 2719* | 5/16-18 | 0.448 | 1.140 | 0.128 | 0.369 | 0.08 | None | None | 0.301 | 0.375 |
| | | 0.428 | 1.110 | 0.122 | 0.349 | | 0.261 | | | |
| JPXN 2718 | 5/16-18 | 0.448 | 1.140 | 0.128 | 0.369 | 0.08 | 0.358 | 0.100 | 0.280 | 0.375 |
| | | 0.428 | 1.110 | 0.122 | 0.349 | | 0.328 | 0.090 | 0.240 | |
| JPXN 3321* | 3/8-16 | 0.572 | 1.265 | 0.128 | 0.448 | 0.09 | None | None | 0.364 | 0.453 |
| | | 0.552 | 1.235 | 0.122 | 0.428 | | 0.324 | | | |
| JPXN 3320 | 3/8-16 | 0.572 | 1.265 | 0.128 | 0.448 | 0.09 | 0.421 | 0.100 | 0.364 | 0.453 |
| | | 0.552 | 1.235 | 0.122 | 0.428 | | 0.396 | 0.090 | 0.324 | |

* NO TARGET AREA

All Dimensions are in Inches

| | | |
|---|---------------------|--|
| JHP Fasteners, Inc. 3721 Northridge Dr NW - Suite 40 Walker, MI 49544 | Drawing No | P - 800.783.0910 P - 616.784.7900 F - 616.913.0085 |
| | Scale NTS | |
| | Revision | Drawn by: M McCormick |