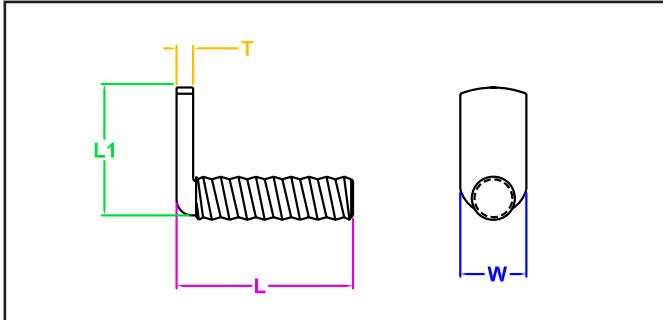


JHP FASTENERS, INC

RIGHT ANGLE WELD STUD

SERIES

JPSS INCH STEEL / PLAIN



JPSS Series - Because of it's design & geometry, this weld stud can be used to resolve many accessibility issues and it is able to be welded to or through the material. Made from a high -welding quality low carbon steel.

Part Number	Thread Size	L Length +0.000/-0.030 *(+0.000/-0.060)	Spade		
			W Width (Ref.)	T Thickness ± 0.005	L1 Length (Ref.)
JPSS 1108	#6-32	0.500	0.218	0.047	0.562
JPSS 1406	#8-32	0.375	0.250	0.063	0.625
JPSS 1408	#8-32	0.500	0.250	0.063	0.625
JPSS 1410	#8-32	0.625	0.250	0.063	0.625
JPSS 1412	#8-32	0.750	0.250	0.063	0.625
JPSS 1416	#8-32	1.000*	0.250	0.063	0.625
JPSS 1424	#8-32	1.250*	0.250	0.063	0.625
JPSS 1506	#10-24	0.375	0.312	0.063	0.688
JPSS 1508	#10-24	0.500	0.312	0.063	0.688
JPSS 1510	#10-24	0.625	0.312	0.063	0.688
JPSS 1512	#10-24	0.750	0.312	0.063	0.688
JPSS 1516	#10-24	1.000*	0.312	0.063	0.688
JPSS 1520	#10-24	1.250*	0.312	0.063	0.688
JPSS 1524	#10-24	1.500*	0.312	0.063	0.688
JPSS 1532	#10-24	2.000*	0.312	0.063	0.688
JPSS1606	#10-32	0.375	0.343	0.063	0.688
JPSS 1608	#10-32	0.500	0.343	0.063	0.688
JPSS 1612	#10-32	0.750	0.343	0.063	0.688
JPSS1616	#10-32	1.000*	0.343	0.063	0.688
JPSS 2108	1/4-20	0.500	0.375	0.094	0.750
JPSS 2110	1/4-20	0.625	0.375	0.094	0.750
JPSS 2112	1/4-20	0.750	0.375	0.094	0.750
JPSS2114	1/4-20	0.875	0.375	0.094	0.750
JPSS 2116	1/4-20	1.000*	0.375	0.094	0.750
JPSS 2120	1/4-20	1.250*	0.375	0.094	0.750
JPSS 2124	1/4-20	1.500*	0.375	0.094	0.750
JPSS 2128	1/4-20	1.750*	0.375	0.094	0.750
JPSS 2132	1/4-20	2.000*	0.375	0.094	0.750
JPSS 2710	5/16-18	0.625	0.437	0.125	0.875
JPSS 2712	5/16-18	0.750	0.437	0.125	0.875
JPSS2716	5/16-18	1.000*	0.437	0.125	0.875
JPSS 2720	5/16-18	1.250*	0.437	0.125	0.875
JPSS 2724	5/16-18	1.500*	0.437	0.125	0.875
JPSS 2732	5/16-18	2.000*	0.437	0.125	0.875
JPSS 3316	3/8-16	1.000*	0.531	0.156	1.000
JPSS 3320	3/8-16	1.250*	0.531	0.156	1.000
JPSS 3324	3/8-16	1.500*	0.531	0.156	1.000

All Dimensions are in Inches

JHP Fasteners, Inc. 610 Maryland NE - Suite B Grand Rapids, MI 49505	Drawing No JPSS	P - 800.783.0910 P - 616.913.0060 F - 616.913.0085
Scale NTS	Revision	Drawn by: M McCormick

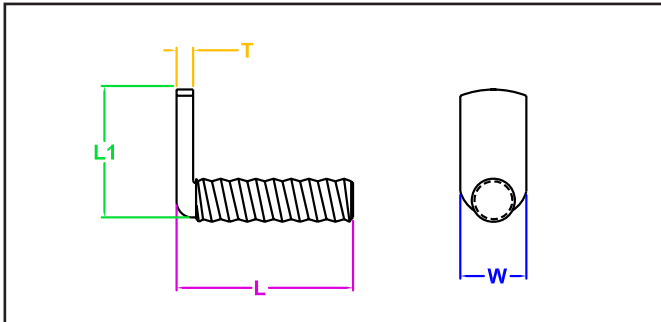
JHP FASTENERS, INC

RIGHT ANGLE WELD STUD

SERIES

JPSSZ
INCH

STAINLESS STEEL/PLAIN



JPSSZ Series - Because of its design & geometry, this weld stud can be used to resolve many accessibility issues and it is able to be welded to or through the material. Made from 18-8 stainless steel.

Part Number	Thread Size	L Length +0.000/-0.030 *(+0.000/-0.060)	Spade		
			W Width (Ref.)	T Thickness ± 0.005	L1 Length (Ref.)
JPSSZ 1106	#6-32	0.375	0.218	0.047	0.562
JPSSZ 1108	#6-32	0.500	0.218	0.047	0.562
JPSSZ 1406	#8-32	0.375	0.250	0.063	0.625
JPSSZ 1408	#8-32	0.500	0.250	0.063	0.625
JPSSZ 1410	#8-32	0.625	0.250	0.063	0.625
JPSSZ 1412	#8-32	0.750	0.250	0.063	0.625
JPSSZ 1416	#8-32	1.000*	0.250	0.063	0.625
JPSSZ 1424	#8-32	1.500*	0.250	0.063	0.625
JPSSZ 1506	#10-24	0.375	0.312	0.063	0.688
JPSSZ 1508	#10-24	0.500	0.312	0.063	0.688
JPSSZ 1510	#10-24	0.625	0.312	0.063	0.688
JPSSZ 1512	#10-24	0.750	0.312	0.063	0.688
JPSSZ 1516	#10-24	1.000*	0.312	0.063	0.688
JPSSZ 1520	#10-24	1.250*	0.312	0.063	0.688
JPSSZ 1524	#10-24	1.500*	0.312	0.063	0.688
JPSSZ 1532	#10-24	2.000*	0.312	0.063	0.688
JPSSZ 1606	#10-32	0.375	0.343	0.063	0.688
JPSSZ 1608	#10-32	0.500	0.343	0.063	0.688
JPSSZ 1612	#10-32	0.750	0.343	0.063	0.688
JPSSZ 1616	#10-32	1.000*	0.343	0.063	0.688
JPSSZ 2108	1/4-20	0.500	0.375	0.094	0.750
JPSSZ 2110	1/4-20	0.625	0.375	0.094	0.750
JPSSZ 2112	1/4-20	0.750	0.375	0.094	0.750
JPSSZ 2114	1/4-20	0.875	0.375	0.094	0.750
JPSSZ 2116	1/4-20	1.000*	0.375	0.094	0.750
JPSSZ 2120	1/4-20	1.250*	0.375	0.094	0.750
JPSSZ 2124	1/4-20	1.500*	0.375	0.094	0.750
JPSSZ 2128	1/4-20	1.750*	0.375	0.094	0.750
JPSSZ 2132	1/4-20	2.000*	0.375	0.094	0.750
JPSSZ 2710	5/16-18	0.625	0.437	0.125	0.875
JPSSZ 2712	5/16-18	0.750	0.437	0.125	0.875
JPSSZ 2716	5/16-18	1.000*	0.437	0.125	0.875
JPSSZ 2720	5/16-18	1.250*	0.437	0.125	0.875
JPSSZ 2724	5/16-18	1.500*	0.437	0.125	0.875
JPSSZ 2732	5/16-18	2.000*	0.437	0.125	0.875
JPSSZ 3316	3/8-16	1.000*	0.531	0.156	1.000
JPSSZ 3320	3/8-16	1.250*	0.531	0.156	1.000
JPSSZ 3324	3/8-16	1.500*	0.531	0.156	1.000

All Dimensions are in Inches

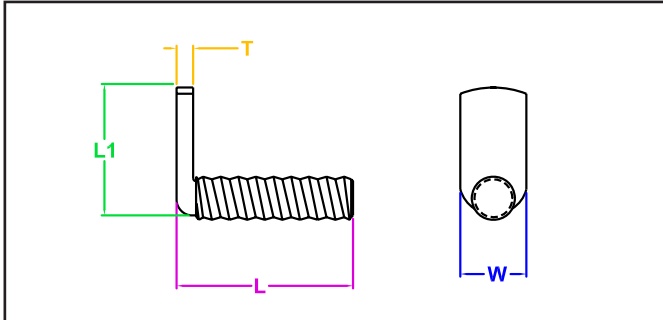
JHP Fasteners, Inc. 610 Maryland NE - Suite B Grand Rapids, MI 49505	Drawing No JPSSZ	P - 800.783.0910 P - 616.913.0060 F - 616.913.0085
Scale NTS	Revision	Drawn by: M McCormick

JHP FASTENERS, INC

RIGHT ANGLE WELD STUD

SERIES

JPSSM METRIC STEEL / PLAIN



JPSSM Series - Because of its design & geometry, this weld stud can be used to resolve many accessibility issues and it is able to be welded to or through the material. Made from a high-welding quality low carbon steel.

Part Number	Thread Size	L Length +0.00/-0.80 *(+0.00/-0.16)	Spade		
			W Width (Ref.) +0.10/-0.15	T Thickness +0.10/-0.15	L1 Length (Ref.)
JPSSM 03514	M3.5 x 0.6	14.00	5.5	1.3	14
JPSSM 04010	M4 x 0.7	10.00	6.2	1.5	15
JPSSM 04014	M4 x 0.7	14.00	6.2	1.5	15
JPSSM 04016	M4 x 0.7	16.00	6.2	1.5	15
JPSSM 04020	M4 x 0.7	20.00	6.2	1.5	15
JPSSM 04025	M4 x 0.7	25.00	6.2	1.5	15
JPSSM 04040	M4 x 0.7	40.00	6.2	1.5	15
JPSSM 05010	M5 x 0.8	10.00	7.9	1.9	17
JPSSM 05014	M5 x 0.8	14.00	7.9	1.9	17
JPSSM 05016	M5 x 0.8	16.00	7.9	1.9	17
JPSSM 05020	M5 x 0.8	20.00	7.9	1.9	17
JPSSM 05025	M5 x 0.8	25.00	7.9	1.9	17
JPSSM 05030	M5 x 0.8	30.00	7.9	1.9	17
JPSSM 05050	M5 x 0.8	50.00	7.9	1.9	17
JPSSM 05014	M6 x 1	14.00	8.9	2.4	19
JPSSM 05016	M6 x 1	16.00	8.9	2.4	19
JPSSM 06020	M6 x 1	20.00	8.9	2.4	19
JPSSM 06025	M6 x 1	25.00	8.9	2.4	19
JPSSM 06030	M6 x 1	30.00	8.9	2.4	19
JPSSM 06040	M6 x 1	40.00	8.9	2.4	19
JPSSM 06050	M6 x 1	50.00	8.9	2.4	19
JPSSM 08016	M8 x 1.25	16.00	11.8	3.3	22
JPSSM 08020	M8 x 1.25	20.00	11.8	3.3	22
JPSSM 08025	M8 x 1.25	25.00	11.8	3.3	22
JPSSM 08030	M8 x 1.25	30.00	11.8	3.3	22
JPSSM 08040	M8 x 1.25	40.00	11.8	3.3	22
JPSSM 08050	M8 x 1.25	50.00	11.8	3.3	22
JPSSM 10025	M10 x 1.5	25.00	14.3	4.3	26
JPSSM 10030	M10 x 1.5	30.00	14.3	4.3	26
JPSSM 10040	M10 x 1.5	40.00	14.3	4.3	26

All Dimensions are in Millimeters

JHP Fasteners, Inc. 610 Maryland NE - Suite B Grand Rapids, MI 49505 Scale NTS	Drawing No JPSSM	P - 800.783.0910 P - 616.913.0060 F - 616.913.0085
	Revision	Drawn by: M McCormick