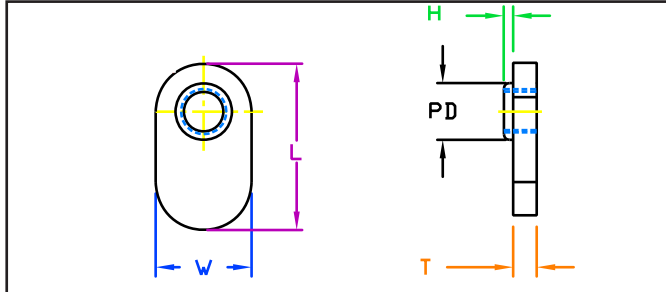


JHP FASTENERS, INC.

SINGLE TAB SPOT-WELD NUT



SERIES

**JPSNM
METRIC
STEEL / PLAIN**



**JPSNM Series - Precision piloted spot-weld nut
made from high-welding quality low carbon steel.
Can be used as a stiffener or brace.**

Part number		JPSNM 03516	JPSNM 04016	JPSNM 05016	JPSNM 06020	JPSNM 08025	JPSNM 10028
Designation		M3.5-6H	M4-6H	M5-6H	M6-6H	M8-6H	M10-6H
Thread Pitch		0.6	0.7	0.8	1.0	1.25	1.5
Width W	Tol.	11	11	11	13	16	16
		+ 0.3	+ 0.3	+ 0.3	+ 0.4	+ 0.4	+ 0.4
		- 0.2	- 0.2	- 0.2	- 0.3	- 0.3	- 0.3
Thickness T	± 0.1	2.4	2.4	2.4	3.2	3.6	3.6
Length L	± 0.4	16	16	16	20.5	25	28.5
Pilot Diameter PD	- 0.2	4.8	5.2	6	7.6	9.2	11.8
	- 0.3						
Pilot Height H	+ 0.3	0.8	0.8	0.8	1.2	2	2.4
	- 0.1						
Pilot Hole Diameter		5.2	5.6	6.4	8	9.6	12.2

All Dimensions are in Millimeters

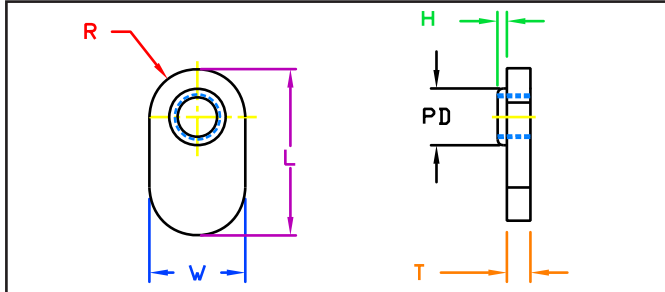
JHP Fasteners, Inc. 3721 Northridge Dr NW - Suite 40 Walker, MI 49544	Drawing No JPSNM	P - 800.783.0910 P - 616.784.7900 F - 616.913.0085
	Scale NTS	Revision

SINGLE TAB SPOT-WELD NUT

SERIES

JPSNMZ
METRIC

STAINLESS / PASSIVATED



JPSNMZ Series - Precision piloted spot-weld nut made from passivated stainless steel. Can be used as a stiffener or brace.

Part Number	Thread	"W" Width	"T" Thickness	"L" Length	Pilot		"R" Ctr. Of Hole to Edge of nut	Hole in Sheet
					"PD" Diameter	"F" Height		
JPSNMZ 03516	M3.5 x 0.6	11.3	2.5	16.4	5.0	0.90	5.2	5.2
		10.8	2.3	15.6	4.5		4.4	
JPSNMZ 04016	M4 x 0.7	9.9	2.5	16.3	5.4	0.76	5.1	5.6
		9.4	2.3	15.5	4.9		4.3	
JPSNMZ 04016-1	M4 x 0.7	11.3	2.5	16.4	5.4	0.90	5.2	5.6
		10.8	2.3	15.6	4.9		4.4	
JPSNMZ 05016	M5 x 0.8	9.9	2.5	16.3	6.2	0.76	5.1	6.4
		9.4	2.3	15.5	5.7		4.3	
JPSNMZ 05016-1	M5 x 0.8	11.3	2.5	16.4	6.2	0.90	5.2	6.4
		10.8	2.3	15.6	5.7		4.4	
JPSNMZ 06020	M6 x 1.0	13.2	3.3	21.0	7.8	1.30	6.7	8.0
		12.6	3.1	20.2	7.3		5.9	
JPSNMZ 08025	M8 x 1.25	16.4	3.7	25.4	9.4	2.10	7.5	9.6
		15.7	3.5	24.6	8.9		6.7	
JPSNMZ 08028	M8 x 1.25	16.6	3.7	29.0	9.4	2.00	9.1	9.6
		15.8	3.5	28.2	8.9		8.3	
JPSNMZ 10028	M10 x 1.5	16.4	3.7	29.0	12.0	2.50	9.1	12.2
		15.7	3.5	28.2	11.5		8.3	

All Dimensions are in Millimeters

JHP Fasteners, Inc. 3721 Northridge Dr NW - Suite 40 Walker, MI 49544	Drawing No	P - 800.783.0910 P - 616.784.7900 F - 616.913.0085
	Scale NTS	JPSNMZ Revision