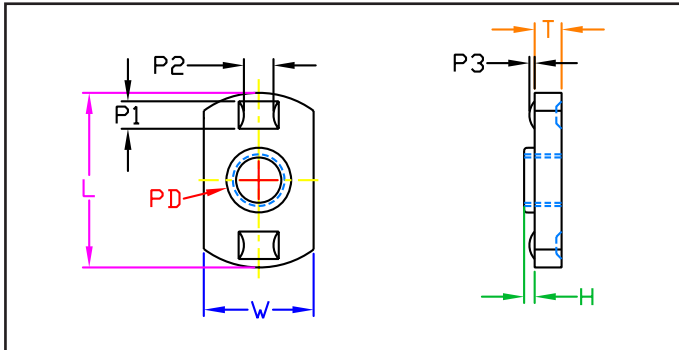


## SERIES

**JPRN  
INCH  
STEEL / PLAIN**

### DUAL RIB PROJECTION TAB WELD NUT



**JPRN Series - Weld nut with a precision pilot and rib projections. Made from a high-welding quality low carbon steel.**

Part Number	Size	Width W	Length L	Thickness T	Pilot		Projections			Hole in Sheet
					Diameter PD	Height H	Width P1	Length P2	Height P3	
JPRN 1110	#6-32	0.390	0.640	0.097	0.198	0.03	0.099	0.109	0.014	0.203
		0.370	0.610	0.091	0.178		0.089	0.079	0.010	
JPRN 1410	#8-32	0.390	0.640	0.097	0.213	0.03	0.099	0.109	0.014	0.219
		0.370	0.610	0.091	0.193		0.089	0.079	0.010	
JPRN 1510	#10-24	0.390	0.640	0.097	0.244	0.03	0.099	0.109	0.014	0.250
JPRN 1710	#10-32	0.370	0.610	0.091	0.224		0.089	0.079	0.010	
JPRN 2113	1/4-20	0.520	0.827	0.128	0.307	0.05	0.130	0.140	0.025	0.312
JPRN 2213	1/4-28	0.495	0.797	0.122	0.287		0.120	0.110	0.021	
JPRN 2716	5/16-18	0.655	0.999	0.145	0.369	0.08	0.130	0.156	0.029	0.375
JPRN 2816	5/16-24	0.620	0.969	0.138	0.349		0.120	0.126	0.025	
JPRN 3316	3/8-16	0.655	0.999	0.145	0.448	0.09	0.130	0.156	0.029	0.453
JPRN 3416	3/8-24	0.620	0.969	0.138	0.428		0.120	0.126	0.025	
JPRN 4418	1/2-13	0.797	1.140	0.191	0.599	0.09	0.130	0.171	0.030	0.609
		0.734	1.110	0.184	0.569		0.120	0.141	0.026	

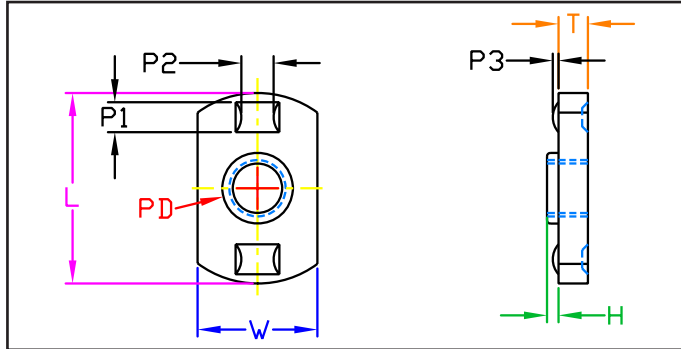
All Dimensions are in Inches

JHP Fasteners, Inc. 3721 Northridge Dr NW - Suite 40 Walker, MI 49544	Drawing No <b>JPRN</b>	P - 800.783.0910 P - 616.784.7900 F - 616.913.0085
Scale <b>NTS</b>	Revision	Drawn by: <b>M McCormick</b>

## SERIES

### JPRNZ INCH STAINLESS STEEL/PLAIN

#### DUAL RIB PROJECTION TAB WELD NUT



**JPRNZ Series - Weld nut with a precision pilot and rib projections. Made from passivated stainless steel.**

Part Number	Size	Width W	Length L	Thickness T	Pilot		Projections			Hole in Sheet
					Diameter PD	Height H	Width P1	Length P2	Height P3	
RNZ 1410	#8-32	0.390	0.097	0.64	0.213	0.03	0.099	0.109	0.014	0.219
		0.370	0.091	0.61	0.193		0.089	0.079	0.010	
RNZ 1510	#10-24	0.390	0.097	0.64	0.244	0.03	0.099	0.109	0.014	0.250
RNZ 1710	#10-32	0.370	0.091	0.61	0.224		0.089	0.079	0.010	
RNZ 2113	1/4-20	0.520	0.128	0.827	0.307	0.05	0.130	0.140	0.025	0.312
RNZ 2213	1/4-28	0.495	0.122	0.797	0.287		0.120	0.110	0.021	
RNZ 2716	5/16-18	0.655	0.145	0.999	0.369	0.08	0.130	0.156	0.029	0.375
RNZ 2816	5/16-24	0.620	0.139	0.969	0.349		0.120	0.126	0.025	
RNZ 3316	3/8-16	0.655	0.145	0.999	0.448	0.09	0.130	0.156	0.029	0.453
RNZ 3416	3/8-24	0.620	0.139	0.969	0.428		0.120	0.126	0.025	

All Dimensions are in Inches

JHP Fasteners, Inc. 3721 Northridge Dr NW - Suite 40 Walker, MI 49544	Drawing No	P - 800.783.0910 P - 616.784.7900 F - 616.913.0085
	Scale NTS	Drawing No <b>JPRNZ</b>
	Revision	Drawn by: M McCormick