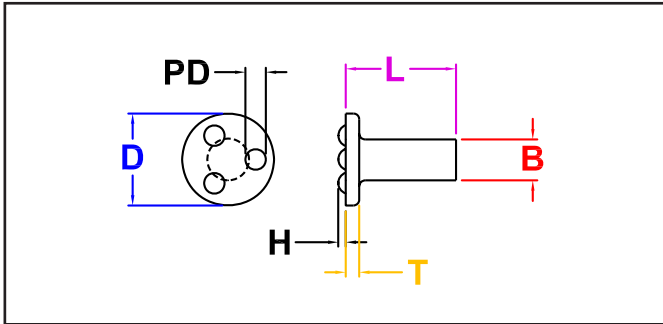


JHP FASTENERS, INC.

FLANGE WELD PIN

SERIES

JPPGM METRIC STEEL / PLAIN



JPPGM Series - This Weld Pin has 3 projections on the flange for attachment to the material. Made from high-welding quality steel.

Part Number	B Body Diameter	L Length ± 0.4	Head		Projection	
			D Diameter ± 0.4	T Thickness ± 0.13	H Height ± 0.05	PD Diameter ± 0.13
JPPGM 03006	3.00/2.90	6.0	7.0	1.20	0.53	1.40
JPPGM 03008	3.00/2.90	8.0	7.0	1.20	0.53	1.40
JPPGM 03012	3.00/2.90	12.0	7.0	1.20	0.53	1.40
JPPGM 03016	3.00/2.90	16.0	7.0	1.20	0.53	1.40
JPPGM 04006	4.00/3.90	6.0	8.0	1.50	0.76	2.03
JPPGM 04008	4.00/3.90	8.0	8.0	1.50	0.76	2.03
JPPGM 04012	4.00/3.90	12.0	8.0	1.50	0.76	2.03
JPPGM 04016	4.00/3.90	16.0	8.0	1.50	0.76	2.03
JPPGM 05008	5.00/4.88	8.0	10.0	1.80	0.93	2.40
JPPGM 05012	5.00/4.88	12.0	10.0	1.80	0.93	2.40
JPPGM 05016	5.00/4.88	16.0	10.0	1.80	0.93	2.40
JPPGM 05020	5.00/4.88	20.0	10.0	1.80	0.93	2.40
JPPGM 06008	6.00/5.87	8.0	12.0	2.10	1.04	2.74
JPPGM 06012	6.00/5.87	12.0	12.0	2.10	1.04	2.74
JPPGM 06016	6.00/5.87	16.0	12.0	2.10	1.04	2.74
JPPGM 06020	6.00/5.87	20.0	12.0	2.10	1.04	2.74
JPPGM 06025	6.00/5.87	25.0	12.0	2.10	1.04	2.74
JPPGM 06030	6.00/5.87	30.0	12.0	2.10	1.04	2.74
JPPGM 06040	6.00/5.87	40.0	12.0	2.10	1.04	2.74
JPPGM 06050	6.00/5.87	50.0	12.0	2.10	1.04	2.74
JPPGM 08016	8.00/7.85	16.0	16.0	2.80	1.27	3.30
JPPGM 08020	8.00/7.85	20.0	16.0	2.80	1.27	3.30
JPPGM 08025	8.00/7.85	25.0	16.0	2.80	1.27	3.30
JPPGM 08030	8.00/7.85	30.0	16.0	2.80	1.27	3.30
JPPGM 08040	8.00/7.85	40.0	16.0	2.80	1.27	3.30
JPPGM 08050	8.00/7.85	50.0	16.0	2.80	1.27	3.30
JPPGM 10025	10.00/9.83	25.0	20.0	3.40	1.44	3.68
JPPGM 10030	10.00/9.83	30.0	20.0	3.40	1.44	3.68
JPPGM 10040	10.00/9.83	40.0	20.0	3.40	1.44	3.68
JPPGM 10050	10.00/9.83	50.0	20.0	3.40	1.44	3.68

Other lengths available upon request.
All Dimensions are in Millimeters

JHP Fasteners, Inc. 3721 Northridge Dr NW - Suite 40 Walker, MI 49544	Drawing No	P - 800.783.0910 P - 616.784.7900 F - 616.913.0085
	Scale NTS	JPPG-M Revision 140303