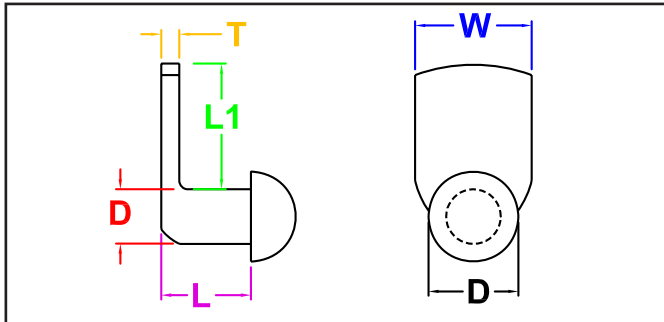


# JHP FASTENERS, INC.

## WELD PIN FOR KEYHOLE

### SERIES

JPKL  
INCH  
STEEL / PLAIN



**JPKL Series - A Weld Pin to be used in conjunction with a mating keyhole, Spotweld in confined areas. Made from high-welding quality steel.**

Part Number	L Length Under Head ±0.015	Spade			HD Head Diameter ±0.005	D Body Diameter ±0.005
		W Width	T Thickness ±0.005	L1 Length		
JPKL 1905	0.312	0.406	0.063	0.438	0.313	0.190
JPKL 1909	0.562	0.406	0.063	0.438	0.313	0.190

All Dimensions are in Inches

JHP Fasteners, Inc. 3721 Northridge Dr NW - Suite 40 Walker, MI 49544	Drawing No	P - 800.783.0910 P - 616.784.7900 F - 616.913.0085
	JPKL	
Scale	Revision	Drawn by:
NTS		M McCormick