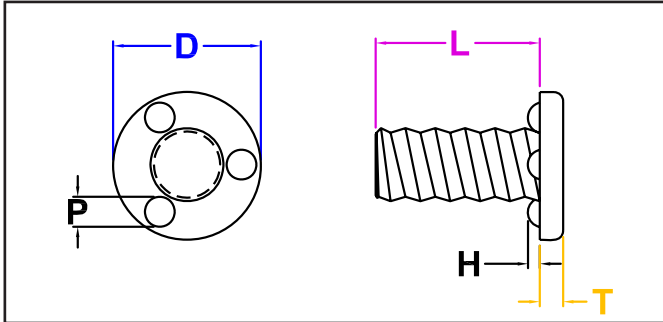


JHP FASTENERS, INC.

FLANGE WELD STUD

SERIES

JPHW INCH STEEL / PLAIN



JPHW Series - This Flange Weld Stud with 3 projections under the head is typically installed in through the material applications. Made from a high-welding quality low carbon steel.

Part Number	Thread Size	L Length +0.000/-0.090	Head		Projection	
			D Diameter ± 0.015	T Thickness ± 0.005	H Height ± 0.002	P Diameter ± 0.005
JPHW 1104	#6-32	0.250	0.313	0.047	0.020	0.050
JPHW 1105	#6-32	0.313	0.313	0.047	0.020	0.050
JPHW 1106	#6-32	0.375	0.313	0.047	0.020	0.050
JPHW 1108	#6-32	0.500	0.313	0.047	0.020	0.050
JPHW 1110	#6-32	0.625	0.313	0.047	0.020	0.050
JPHW 1112	#6-32	0.750	0.313	0.047	0.020	0.050
JPHW 1114	#6-32	0.875	0.313	0.047	0.020	0.050
JPHW 1404	#8-32	0.250	0.375	0.063	0.025	0.070
JPHW 1405	#8-32	0.313	0.375	0.063	0.025	0.070
JPHW 1406	#8-32	0.375	0.375	0.063	0.025	0.070
JPHW 1408	#8-32	0.500	0.375	0.063	0.025	0.070
JPHW 1410	#8-32	0.625	0.375	0.063	0.025	0.070
JPHW 1412	#8-32	0.750	0.375	0.063	0.025	0.070
JPHW 1416	#8-32	1.000	0.375	0.063	0.025	0.070
JPHW 1420	#8-32	1.250	0.375	0.063	0.025	0.070
JPHW 1424	#8-32	1.500	0.375	0.063	0.025	0.070
JPHW 1506	#10-24	0.375	0.438	0.063	0.030	0.080
JPHW 1508	#10-24	0.500	0.438	0.063	0.030	0.080
JPHW 1510	#10-24	0.625	0.438	0.063	0.030	0.080
JPHW 1512	#10-24	0.750	0.438	0.063	0.030	0.080
JPHW 1516	#10-24	1.000	0.438	0.063	0.030	0.080
JPHW 1520	#10-24	1.250	0.438	0.063	0.030	0.080
JPHW 1606	#10-32	0.375	0.438	0.063	0.030	0.080
JPHW 1608	#10-32	0.500	0.438	0.063	0.030	0.080
JPHW 1609	#10-32	0.563	0.438	0.063	0.030	0.080
JPHW 1610	#10-32	0.625	0.438	0.063	0.030	0.080
JPHW 1612	#10-32	0.750	0.438	0.063	0.030	0.080
JPHW 1614	#10-32	0.875	0.438	0.063	0.030	0.080
JPHW 1616	#10-32	1.000	0.438	0.063	0.030	0.080
JPHW 1620	#10-32	1.250	0.438	0.063	0.030	0.080
JPHW 1624	#10-32	1.500	0.438	0.063	0.030	0.080

All Dimensions are in Inches

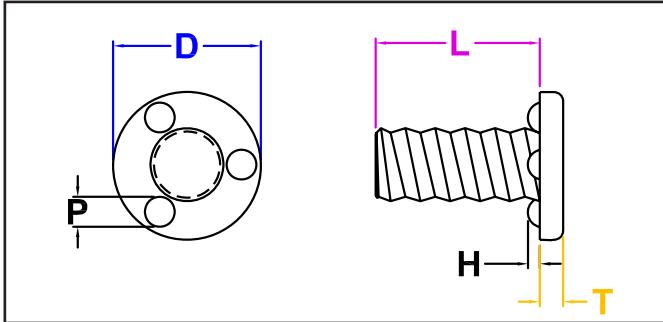
JHP Fasteners, Inc. 3721 Northridge Dr NW - Suite 40 Walker, MI 49544	Drawing No	P - 800.783.0910 P - 616.784.7900 F - 616.913.0085
	Scale NTS	Drawing No JPHW-I1

JHP FASTENERS, INC.

FLANGE WELD STUD

SERIES

JPHW INCH STEEL / PLAIN



JPHW Series - This Flange Weld Stud with 3 projections under the head is typically installed in through the material applications. Made from a high-welding quality low carbon steel.

Part Number	Thread Size	L Length +0.000/-0.090	Head		Projection	
			D Diameter ± 0.015	T Thickness ± 0.005	H Height ± 0.002	P Diameter ± 0.005
JPHW 2106	1/4-20	0.375	0.561	0.078	0.040	0.100
JPHW 2108	1/4-20	0.500	0.561	0.078	0.040	0.100
JPHW 2110	1/4-20	0.625	0.561	0.078	0.040	0.100
JPHW 2112	1/4-20	0.750	0.561	0.078	0.040	0.100
JPHW 2114	1/4-20	0.875	0.561	0.078	0.040	0.100
JPHW 2116	1/4-20	1.000	0.561	0.078	0.040	0.100
JPHW 2120	1/4-20	1.250	0.561	0.078	0.040	0.100
JPHW 2124	1/4-20	1.500	0.561	0.078	0.040	0.100
JPHW 2128	1/4-20	1.750	0.561	0.078	0.040	0.100
JPHW 2132	1/4-20	2.000	0.561	0.078	0.040	0.100
JPHW 2136	1/4-20	2.250	0.561	0.078	0.040	0.100
JPHW 2148	1/4-20	3.000	0.561	0.078	0.040	0.100
JPHW 2708	5/16-18	0.500	0.740	0.094	0.045	0.120
JPHW 2710	5/16-18	0.625	0.740	0.094	0.045	0.120
JPHW 2712	5/16-18	0.750	0.740	0.094	0.045	0.120
JPHW 2714	5/16-18	0.875	0.740	0.094	0.045	0.120
JPHW 2716	5/16-18	1.000	0.740	0.094	0.045	0.120
JPHW 2720	5/16-18	1.250	0.740	0.094	0.045	0.120
JPHW 2724	5/16-18	1.500	0.740	0.094	0.045	0.120
JPHW 2732	5/16-18	2.000	0.740	0.094	0.045	0.120
JPHW 2810	5/16-24	0.625	0.740	0.094	0.045	0.120
JPHW 2812	5/16-24	0.750	0.740	0.094	0.045	0.120
JPHW 2816	5/16-24	1.000	0.740	0.094	0.045	0.120
JPHW 3312	3/8-16	0.750	0.865	0.109	0.050	0.130
JPHW 3314	3/8-16	0.875	0.865	0.109	0.050	0.130
JPHW 3316	3/8-16	1.000	0.865	0.109	0.050	0.130
JPHW 3320	3/8-16	1.250	0.865	0.109	0.050	0.130
JPHW 3324	3/8-16	1.500	0.865	0.109	0.050	0.130
JPHW 3328	3/8-16	1.750	0.865	0.109	0.050	0.130
JPHW 3332	3/8-16	2.000	0.865	0.109	0.050	0.130
JPHW 4416	1/2-13	1.000	0.990	0.141	0.060	0.150
JPHW 4420	1/2-13	1.250	0.990	0.141	0.060	0.150
JPHW 4424	1/2-13	1.500	0.990	0.141	0.060	0.150
JPHW 4428	1/2-13	1.750	0.990	0.141	0.060	0.150

All Dimensions are in Inches

JHP Fasteners, Inc. 3721 Northridge Dr NW - Suite 40 Walker, MI 49544	Drawing No JPHW-I2	P - 800.783.0910 P - 616.784.7900 F - 616.913.0085
	Scale NTS	Revision