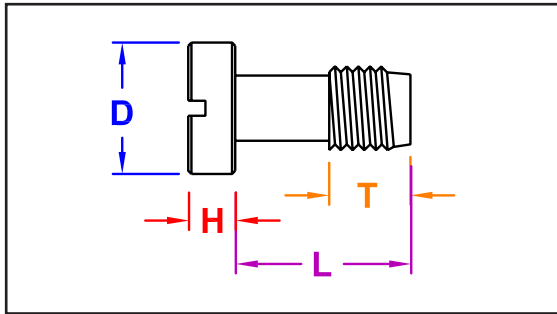


FLUSH MOUNTED SCREW



Manufactured by Captive Fastener Corp

CFS2 flush mounted screws can be assembled with CFR2 & CFN2 components to create a panel fastener assembly.

INCH

Part Number		All dimensions are in inches			
Thread Size	Stainless Steel	D Nom.	T +.002 -.006	L ±.010	H Nom.
#4-40	CFS2 44040	0.18	0.075	0.33	0.13
#6-32	CFS2 63240	0.21	0.075	0.33	0.13
#8-32	CFS2 83240	0.25	0.075	0.33	0.13
#10-32	CFS2 103240	0.28	0.075	0.33	0.13
Finish	Passivated				

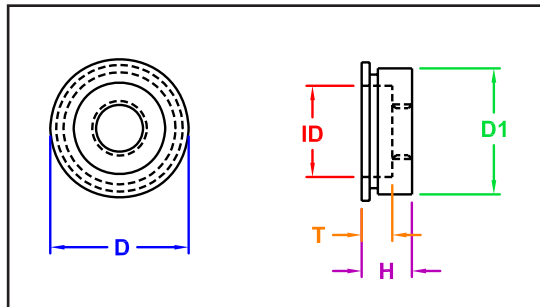
METRIC

Part Number		All dimensions are in millimeters			
Thread Size	Stainless Steel	D Nom.	T +.05 -.15	L ±.25	H Nom.
M3 x 0.5	CFS2 M340	4.7	1.9	8.3	3.3
M4 x 0.7	CFS2 M440	6.3	1.9	8.3	3.3
M5 x 0.8	CFS2 M540	7.1	1.9	8.3	3.3
Finish	Passivated				

"PEM" is a registered trademark of Penn Engineering®. Captive Fastener Corporation parts are substitutes for the PEM part numbers in form, fit & function.

JHP Fasteners, Inc. 610 Maryland NE - Suite B Grand Rapids, MI 49505	Drawing No CFS2	P - 800.783.0910 P - 616.913.0060 F - 616.913.0085
Scale NTS	Revision	Drawn by: M McCormick

FLUSH MOUNTED RETAINER



Manufactured by Captive Fastener Corp

CFR2 flush mounted retainers can be assembled with CFS2 & CFN2 components to create a panel fastener assembly.

INCH

Part Number		All dimensions are in inches								
Thread Size	Stainless Steel	H Max	Minimum Mat'l Thick	Minimum Flush Installation	Hole Size +.003 -.000	ID Nom.	D1 Max	D Nom.	T Norm.	Min Dist to Edge
#4-40	CFR2 440	0.124	0.050	0.125	0.281	0.195	0.280	0.310	0.075	0.310
#6-32	CFR2 632	0.124	0.050	0.125	0.312	0.225	0.311	0.340	0.075	0.330
#8-32	CFR2 832	0.124	0.050	0.125	0.344	0.255	0.343	0.370	0.075	0.340
#10-32	CFR2 1032	0.124	0.050	0.125	0.375	0.290	0.374	0.410	0.075	0.360
Finish	Passivated									

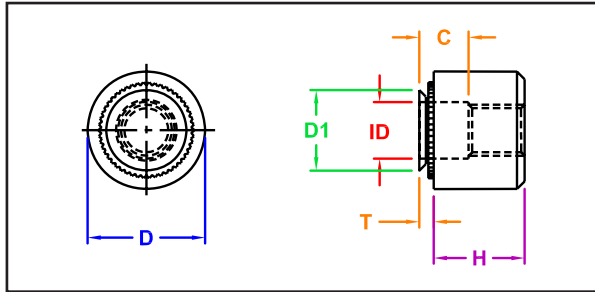
METRIC

Part Number		All dimensions are in millimeters								
Thread Size	Stainless Steel	H Max	Minimum Mat'l Thick	Minimum Flush Installation	Hole Size +.08 -.00	ID Nom.	D1 Max	D Nom.	IL Norm.	Min Dist to Edge
M3 X 0.5	CFR2 M3	3.15	1.40	3.20	7.10	5.00	7.08	7.90	2.0	7.90
M4 X 0.7	CFR2 M4	3.15	1.40	3.20	8.75	6.50	8.71	9.50	2.0	8.70
M5 X 0.8	CFR2 M5	3.15	1.40	3.20	9.50	7.40	9.47	10.30	2.0	9.20
Finish	Passivated									

"PEM" is a registered trademark of Penn Engineering®. Captive Fastener Corporation parts are substitutes for the PEM part numbers in form, fit & function.

JHP Fasteners, Inc. 610 Maryland NE - Suite B Grand Rapids, MI 49505	Drawing No CFR2	P - 800.783.0910 P - 616.913.0060 F - 616.913.0085
Scale NTS	Revision	Drawn by: M McCormick

SELF-CLINCHING NUT



Manufactured by Captive Fastener Corp

CFN2 flush mounted nuts can be assembled with CFS2 & CFR2 components to create a panel fastener assembly.

INCH

Part Number		All dimensions are in inches								
Thread Size	Carbon Steel	T Max	Minimum Mat'l Thick	Hole Size +.003 -.000	D1 Max	D Nom.	C ±.010	ID Nom.	H Max	Min Dist to Edge
#4-40	CFN2 440-1	0.038	0.040	0.187	0.186	0.280	0.130	0.120	0.240	0.220
#6-32	CFN2 632-1	0.038	0.040	0.213	0.212	0.310	0.130	0.150	0.240	0.270
#8-32	CFN2 832-1	0.038	0.040	0.250	0.249	0.340	0.130	0.180	0.240	0.280
#10-32	CFN2 1032-1	0.038	0.040	0.277	0.276	0.370	0.130	0.210	0.240	0.310

METRIC

Part Number		All dimensions are in millimeters								
Thread Size	Carbon Steel	T Max	Minimum Mat'l Thick	Hole Size +.08 -.000	D1 Max	D Nom.	C ±.25	ID Nom.	H Max	Min Dist to Edge
M3 X 0.5	CFN2 M3-1	0.97	1.00	4.75	4.73	7.1	3.30	3.20	6.00	7.90
M4 X 0.7	CFN2 M4-1	0.97	1.00	6.40	6.38	8.7	3.30	4.70	6.00	8.70
M5 X 0.8	CFN2 M5-1	0.97	1.00	7.00	6.96	9.5	3.30	5.40	6.00	9.20

"PEM" is a registered trademark of Penn Engineering®. Captive Fastener Corporation parts are substitutes for the PEM part numbers in form, fit & function.

JHP Fasteners, Inc. 610 Maryland NE - Suite B Grand Rapids, MI 49505	Drawing No CFN2	P - 800.783.0910 P - 616.913.0060 F - 616.913.0085
Scale NTS	Revision	Drawn by: M McCormick