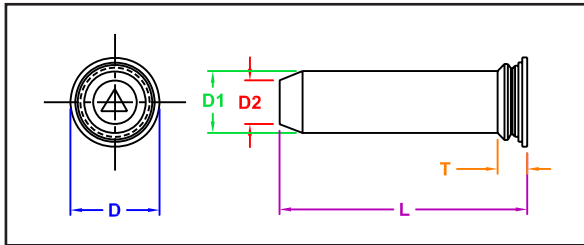


SELF-CLINCHING TAPERED PINS



SERIES
Captive - CGS
PEM® - TPS
JHP Fasteners - FHTP



Manufactured by Captive Fastener Corp

CGS Tapered Guide Pins provide a strong flush-head assembly in materials as thin as .040" (1mm) with high pushout resistance. A tapered end allows ease of locating mating hole in a variety of alignment and pivot applications.

INCH

Pin Dia. D1 ± 0.002	All dimensions are in inches					D ±0.015	T (max)	D2 ±.006	Minimum Mat'l Thick	Hole Size +.003 -.000	Minimum Distance to Edge
	L Length ± 0.015 inches										
	0.375	0.500	0.625	0.750	1.00						
0.125	-6	-8	-10	-12		0.250	0.090	0.090	0.040	0.144	0.250
0.187	-6	-8	-10	-12	-16	0.270	0.090	0.132	0.040	0.205	0.280
0.250		-8	-10	-12	-16	0.335	0.090	0.177	0.040	0.272	0.310

METRIC

Pin Dia. D1 ± 0.05	All dimensions are in millimeters					D ±0.4	T (max)	D2 ±.15	Minimum Mat'l Thick	Hole Size +.08 -.000	Minimum Distance to Edge
	L Length ± 0.04mm										
	8	10	12	16	20						
3mm	-8	-10	-12	-16		5.2	2.29	2.05	1	3.5	6.4
4mm	-8	-10	-12	-16		6.12	2.29	2.82	1	4.5	7.1
5mm		-10	-12	-16	-20	7.19	2.29	3.53	1	5.5	7.6
6mm			-12	-16	-20	8.13	2.29	4.24	1	6.5	7.9

"PEM" is a registered trademark of Penn Engineering®.
Captive Fastener Corporation parts are substitutes for
the PEM part numbers in form, fit & function.

JHP Fasteners, Inc. 610 Maryland NE - Suite B Grand Rapids, MI 49505	Drawing No FHTP	P - 800.783.0910 P - 616.913.0060 F - 616.913.0085
Scale NTS	Revision	Drawn by: M McCormick