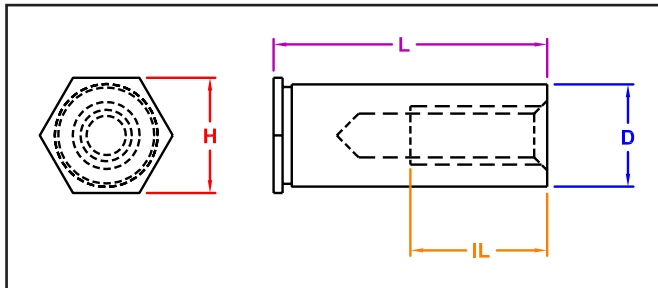


## SELF-CLINCHING STANDOFFS



Manufactured by Captive Fastener Corp



**CFBSO self-clinching standoffs are designed for quick, easy installation with any standard pneumatic, hydraulic or mechanical press. Blind standoffs are used in metal panels with thickness of .040 inches and up. No secondary operation such as reaming or deburring, is necessary prior to installation.**

### INCH

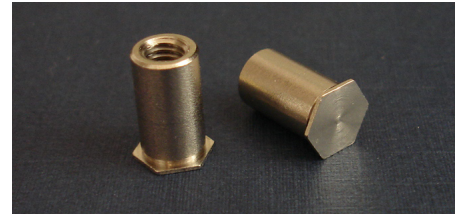
All Dimension are in inches

Thread Size	Part Number	L Length + 0.002 in. - 0.005 in.														Hole Size +0.003 -0.000	D + 0.005 -0.000	H Nom	Min Distance to Edge	Min Mat'l Thick		
		0.125	0.188	0.250	0.313	0.375	0.438	0.500	0.563	0.625	0.688	0.750	0.813	0.875	0.938						1.00	1.063
#4-40	CFBSO440																	0.166	0.165	0.188	0.23	0.04
	CFBSOS 440			-8	-10	-12	-14	-16	-18	-20	-22	-24	-26	-28	-30	-32	-34					
	CFBSOA440																					
#4-40	CFBSO6440																	0.213	0.212	0.250	0.27	0.04
	CFBSOS6440			-8	-10	-12	-14	-16	-18	-20	-22	-24	-26	-28	-30	-32	-34					
	CFBSOA6440																					
#6-32	CFBSO632																	0.213	0.212	0.250	0.27	0.04
	CFBSOS632			-8	-10	-12	-14	-16	-18	-20	-22	-24	-26	-28	-30	-32	-34					
	CFBSOA632																					
#6-32	CFBSO8632																	0.281	0.280	0.313	0.31	0.05
	CFBSOS8632			-8	-10	-12	-14	-16	-18	-20	22	-24	-26	-28	-30	-32	-34					
	CFBSOA8632																					
#8-32	CFBSO832																	0.281	0.280	0.313	0.31	0.05
	CFBSOS832			-8	-10	-12	-14	-16	-18	-20	-22	-24	-26	-28	-30	-32	-34					
	CFBSOA832																					
#10-32	CFBSO1032																	0.281	0.280	0.313	0.31	0.05
	CFBSOS1032				-10	-12	-14	-16	-18	-20	-22	-24	-26	-28	-30	-32	-34					
	CFBSOA1032																					
IL Dim. Min.		N/A		0.156		0.188		0.250			0.375											

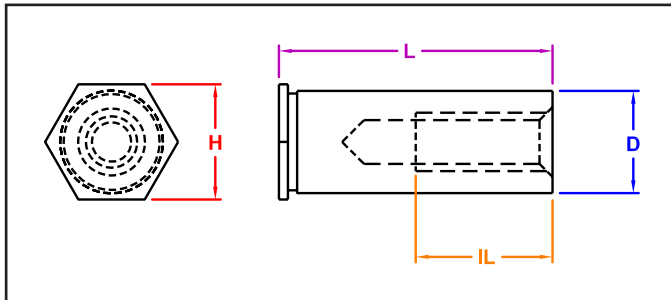
"PEM" is a registered trademark of Penn Engineering®. Captive Fastener Corporation parts are substitutes for the PEM part numbers in form, fit & function.

JHP Fasteners, Inc. 610 Maryland NE - Suite B Grand Rapids, MI 49505	Drawing No <b>BSO-I</b>	P - 800.783.0910 P - 616.913.0060 F - 616.913.0085
Scale <b>NTS</b>	Revision	Drawn by: <b>M McCormick</b>

## SELF-CLINCHING STANDOFFS



Manufactured by Captive Fastener Corp



CFBSO self-clinching standoffs are designed for quick, easy installation with any standard pneumatic, hydraulic or mechanical press. Blind standoffs are used in metal panels with thickness of .040 inches and up. No secondary operation such as reaming or deburring, is necessary prior to installation.

### METRIC

All Dimension are in millimeters

Thread Size	Part Number	L Length + 0.05mm / - 0.13mm												Hole Size +0.08 -0.00	D +0.00 -0.13	H Nom	Min	Min Mat'l Thick
		3	4	6	8	10	12	14	16	18	20	22	25					
M3	CFBSOM3																	
	CFBSOSM3				-8	-10	-12	-14	-16	-18	-20	-22	-25					
	CFBSOAM3													4.2	4.19	4.8	6.0	1.0
M3	CFBSO3.5M3																	
	CFBSOS3.5M3			-6	-8	-10	-12	-14	-16	-18	-20	-22	-25					
	CFBSOA3.5M3													5.4	5.38	6.4	7.0	1.0
M3.5	CFBSOM3.5																	
	CFBSOSM3.5			-6	-8	-10	-12	-14	-16	-18	-20	-22	-25					
	CFBSOAM3.5													5.4	5.38	6.4	7.0	1.0
M4	CFBSOM4																	
	CFBSOSM4				-8	-10	-12	-14	-16	-18	-20	-22	-25					
	CFBSOAM4													7.2	7.11	7.9	8.0	1.3
M5	CFBSOM5																	
	CFBSOSM5				-8	-10	-12	-14	-16	-18	-20	-22	-25					
	CFBSOAM5													7.2	7.11	7.9	8.0	1.3
IL Dim. Min.				3.2	4.0	5.0	6.5					9.5						

"PEM" is a registered trademark of Penn Engineering®. Captive Fastener Corporation parts are substitutes for the PEM part numbers in form, fit & function.

JHP Fasteners, Inc. 610 Maryland NE - Suite B Grand Rapids, MI 49505	Drawing No <b>BSO-M</b>	P - 800.783.0910 P - 616.913.0060 F - 616.913.0085
Scale NTS	Revision	Drawn by: M McCormick