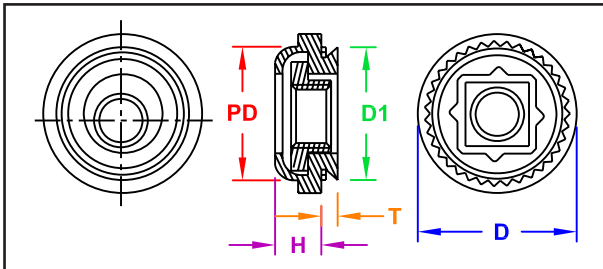


FLOATING CLINCH NUTS

SERIES
Captive - CFAS / CFAC
PEM® - AS / AC
JHP Fasteners - A



Manufactured by Captive Fastener Corp

CFAS & CFAC floating clinch nuts provide a self-clinching fastener with a floating nut that compensates for mating misalignments to 0.030 inches (.8mm).

INCH

Part Number		All dimensions are in inches								
Thread Size	Carbon Steel	Stainless Steel	T (max)	Min Mat'l Thickness	Hole Size	D1 (max)	PD (max)	D (± .015")	H (max)	Min Dist to Edge
#4-40	CFAS440-1	CFAC440-1	0.038	0.040	0.290	0.289	0.290	0.360	0.130	0.300
	CFAS440-2	CFAC440-2	0.054	0.056						
#6-32	CFAS632-1	CFAC632-1	0.038	0.040	0.328	0.327	0.335	0.390	0.130	0.320
	CFAS632-2	CFAC632-2	0.054	0.056						
#8-32	CFAS832-1	CFAC832-1	0.038	0.040	0.368	0.367	0.365	0.440	0.130	0.340
	CFAS832-2	CFAC832-2	0.054	0.056						
#10-24	CFAS1024-1	CFAC1024-1	0.038	0.040	0.406	0.405	0.405	0.470	0.160	0.360
	CFAS1024-2	CFAC1024-2	0.054	0.056						
#10-32	CFAS1032-1	CFAC1032-1	0.038	0.040	0.515	0.514	0.510	0.600	0.200	0.420
	CFAS1032-2	CFAC1032-2	0.054	0.056						
1/4-20	† CFAS420-2	† CFAC420-2	0.054	0.056	0.515	0.514	0.510	0.600	0.200	0.420
1/4-28	† CFAS428-2	† CFAC428-2	0.054	0.056						
Finish	Zinc Clear	Passivated	† Normally Not Stocked. Available on special order.							

METRIC

Part Number		All dimensions are in millimeters								
Thread Size	Carbon Steel	Stainless Steel	T (max)	Min Mat'l Thickness	Hole Size	D1 (max)	PD (max)	D (± 0.4mm)	H (max)	Min Dist to Edge
M3 X 0.50	CFASM3-1	CFACM3-1	0.97	1.00	7.40	7.34	7.40	9.10	3.30	7.60
	CFASM3-2	CFACM3-2	1.37	1.40						
M4 X 0.70	CFASM4-1	CFACM4-1	0.97	1.00	9.40	9.32	9.30	11.20	3.30	8.60
	CFASM4-2	CFACM4-2	1.37	1.40						
M5 X 0.80	CFASM5-1	CFACM5-1	0.97	1.00	10.30	10.29	10.30	11.90	4.30	9.00
	CFASM5-2	CFACM5-2	1.37	1.40						
M6 X 1.0	† CFASM6-2	† CFACM6-2	1.37	1.40	13.10	13.06	13.00	15.30	5.30	11.00
Finish	Zinc Clear	Passivated	† Normally Not Stocked. Available on special order.							

"PEM" is a registered trademark of Penn Engineering®. Captive Fastener Corporation parts are substitutes for the PEM part numbers in form, fit & function.

JHP Fasteners, Inc. 610 Maryland NE - Suite B Grand Rapids, MI 49505	Drawing No A-D/C	P - 800.783.0910 P - 616.913.0060 F - 616.913.0085
Scale NTS	Revision	Drawn by: M McCormick