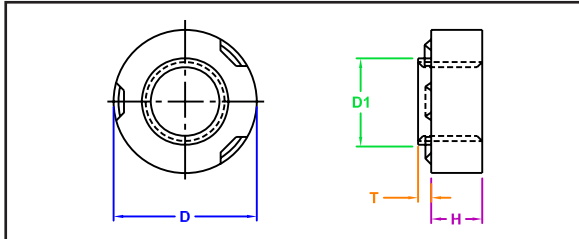


### WELD NUTS



Manufactured by Captive Fastener Corp

CFWN weld nuts are the solution to providing load bearing threads in sheets that are too thin to tap. They provide three-point projections for fast, easy welding. Captive Fastener weld nuts self align into standard hole sizes and are dimensionally identical to industry standards. The alignment collar orients the weld nut and prevents weld spatter from entering thread area.

### INCH

Thread Size	Part Number		All dimensions are in inches						
	Carbon Steel	Stainless Steel	Minimum Mat'l Thick	Hole Size +.004 -.000	D1 (max.)	T (max)	H ±.004	D +.000 -.010	Min Dist to Edge
#4-40	CFWN440	CFWNS440	0.030	0.173	0.171	0.030	0.063	0.310	0.15
#6-32	CFWN632	CFWNS632	0.030	0.193	0.191	0.030	0.093	0.340	0.17
	CFWN632-1		0.060	0.193	0.191	0.050			
#8-32	CFWN832	CFWNS832	0.030	0.218	0.216	0.030	0.107	0.370	0.18
	CFWN832-1		0.060	0.218	0.216	0.050			
#10-24	CFWN1024	CFWNS1024	0.030	0.250	0.248	0.030	0.155	0.440	0.22
	CFWN1024-1		0.060	0.250	0.248	0.050			
#10-32	CFWN1032	CFWNS1032	0.030	0.250	0.248	0.030	0.155	0.440	0.22
	CFWN1032-1		0.060	0.250	0.248	0.050			
1/4-20	CFWN420	CFWNS420	0.050	0.316	0.315	0.048	0.185	0.520	0.26
Finish	Light Oil Coat	Passivated							

### METRIC

Thread Size	Part Number		All dimensions are in millimeters						
	Carbon Steel	Stainless Steel	Minimum Mat'l Thick	Hole Size +.01 -.00	D1 (max.)	T (max)	H ±.1	D +.000 -.25	Min Dist to Edge
M3 X 0.5	CFWNM3	CFWNSM3	0.75	4.4	4.37	0.77	1.5	7.95	4.5
M4 X 0.7	CFWNM4	CFWNSM4	0.77	5.6	5.57	0.77	2.6	9.40	5.2
M5 X 0.8	CFWNM5	CFWNSM5	0.77	6.4	6.33	0.77	3.8	11.10	5.7
M6 X 1.0	CFWNM6	CFWNSM6	1.25	8.1	8.03	1.24	4.6	13.20	6.7
Finish	Light Oil Coat	Passivated							

"PEM" is a registered trademark of Penn Engineering®. Captive Fastener Corporation parts are substitutes for the PEM part numbers in form, fit & function.

JHP Fasteners, Inc. 610 Maryland NE - Suite B Grand Rapids, MI 49505	Drawing No <b>SSN</b>	P - 800.783.0910 P - 616.913.0060 F - 616.913.0085
Scale NTS	Revision	Drawn by: M McCormick