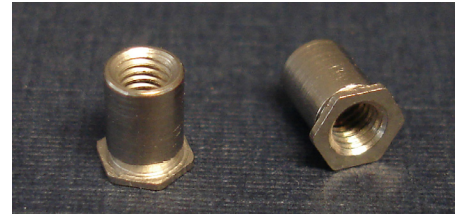
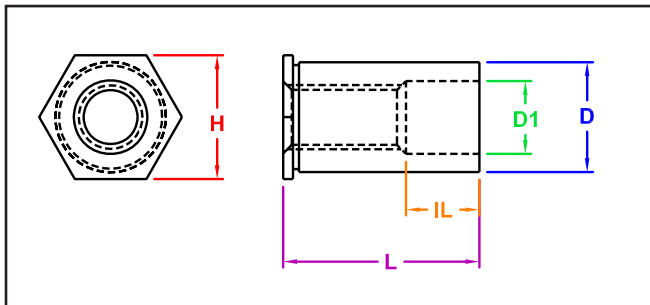


## SELF-CLINCHING STANDOFFS



Manufactured by Captive Fastener Corp



**CF4-SO standoffs are designed to be pressed into round holes in stainless steel material as thin as .040 inches (1mm). The through-hole versions are available in a choice of inch and metric sizes.**

### INCH

All Dimension are in inches

Thread Size	Part Number 400 Series Stainless	L Length + 0.002 in. - 0.005 in.														Hole Size +0.003 -0.000	D +0.000 -0.005	H Nom	D1 ± 0.005	Min Distance to Edge	Min Mat'l Thick		
		0.125	0.187	0.250	0.312	0.375	0.437	0.500	0.562	0.625	0.687	0.750	0.812	0.875	0.937							1.00	1.062
#4-40	CF4SO440	-4	-6	-8	-10	-12	-14	-16	-18	-20	-22	-24					0.166	0.165	0.187	0.125	0.23	0.04	
	CF4SO6440	-4	-6	-8	-10	-12	-14	-16	-18	-20	-22	-24					0.213	0.212	0.250	0.125	0.28	0.04	
#6-32	CF4SO632	-4	-6	-8	-10	-12	-14	-16	-18	-20	-22	-24	-26	-28	-30	-32	-34	0.213	0.212	0.250	0.156	0.28	0.04
	CF4SO8632	-4	-6	-8	-10	-12	-14	-16	-18	-20	-22	-24	-26	-28	-30	-32	-34	0.281	0.280	0.312	0.156	0.33	0.05
#8-32	CF4SO832	-4	-6	-8	-10	-12	-14	-16	-18	-20	-22	-24	-26	-28	-30	-32	-34	0.281	0.280	0.312	0.188	0.33	0.05
#10-32	CF4SO1032	-4	-6	-8	-10	-12	-14	-16	-18	-20	-22	-24	-26	-28	-30	-32	-34	0.281	0.280	0.312	0.203	0.33	0.05
IL ± 0.0156		None				0.187				0.312				0.437									

### METRIC

All Dimension are in millimeters

Thread Size	Part Number 400 Series Stainless	L Length + 0.002 in. - 0.005 in.													Hole Size +0.003 -0.000	D +0.000 -0.005	H Nom	D1 ± 0.005	Min Distance to Edge	Min Mat'l Thick			
		3	4	6	8	10	12	14	16	18	20	22	25										
M3	CF4-SO M3	-3	-4	-6	-8	-10	-12	-14	-16	-18					4.2	4.2	4.8	3.25	6	1.02			
	CF4-SO 3.5M3	-3	-4	-6	-8	-10	-12	-14	-16	-18					5.41	5.39	6	3.25	7.1	1.02			
M3.5	CF4-SO 3.5M3	-3	-4	-6	-8	-10	-12	-14	-16	-18	-20	-22	-25	5.41	5.39	6.4	3.9	7.1	1.02				
M4	CF4-SO M4	-3	-4	-6	-8	-10	-12	-14	-16	-18	-20	-22	-25	7.14	7.12	7.9	4.8	8.4	1.27				
M5	CF4-SO M5	-3	-4	-6	-8	-10	-12	-14	-16	-18	-20	-22	-25	7.14	7.12	7.9	5.35	8.4	1.27				
IL (± 0.4)		None				4.0				8.0				11.0									

"PEM" is a registered trademark of Penn Engineering®. Captive Fastener Corporation parts are substitutes for the PEM part numbers in form, fit & function.

JHP Fasteners, Inc. 610 Maryland NE - Suite B Grand Rapids, MI 49505	Drawing No <b>TSO-C4</b>	P - 800.783.0910 P - 616.913.0060 F - 616.913.0085
Scale NTS	Revision	Drawn by: M McCormick