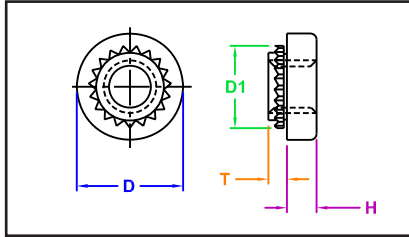


## BROACHING-TYPE NUTS



**SERIES**  
 Captive - CKF2 / CKFS2  
 PEM® - KF2 / KFS2  
 JHP Fasteners - SKF



Manufactured by Captive Fastener Corp

**CKF2 & CKFS2 broaching-type nuts are designed for use on printed circuit boards and on most brittle or hard materials: glass laminates, epoxy or resin with paper, nylon or canvas bases. They are also used on materials too thin or unsuitable for threading, such as acrylic and polycarbonate panels.**

### INCH

All dimensions are in inches

Thread Size	Carbon Steel	Stainless Steel	Minimum Mat'l Thick	Hole Size +.003	D1 ±.003	D ± 0.005	H ± 0.005	Min Dist to Edge
#2-56	CKF2256	CKFS2256	0.16	0.147	0.165	0.219	0.065	0.060
#4-40	CKF2440	CKFS2440	0.17	0.166	0.184	0.219	0.065	0.060
#6-32	CKF2632	CKFS2632	0.22	0.213	0.231	0.281	0.065	0.060
#8-32	CKF2832	CKFS2832	0.25	0.250	0.268	0.344	0.096	0.060
#10-24	CKF21024	CKFS21024	0.28	0.272	0.290	0.375	0.127	0.060
#10-32	CKF21032	CKFS21032	0.28	0.272	0.290	0.375	0.127	0.060

### METRIC

All dimensions are in millimeters

Thread Size	Carbon Steel	Stainless Steel	Minimum Mat'l Thick	Hole Size +.08	D1 ±.08	D ± 0.13	H ± 0.13	Min Dist to Edge
M2 X 0.45	CKF2M2	CKFS2M2	4.2	3.7	4.19	5.56	1.5	1.5
M2.5 X 0.45	CKF2M2.5	CKFS2M2.5	4.5	4.2	4.68	5.56	1.5	1.5
M3 X 0.5	CKF2M3	CKFS2M3	4.5	4.2	4.68	5.56	1.5	1.5
M4 X 0.7	CKF2M4	CKFS2M4	6.4	6.4	6.82	8.74	2.0	1.5
M5 X 0.8	CKF2M5	CKFS2M5	7.1	6.9	7.37	9.53	3.0	1.5

"PEM" is a registered trademark of Penn Engineering®. Captive Fastener Corporation parts are substitutes for the PEM part numbers in form, fit & function.

JHP Fasteners, Inc. 610 Maryland NE - Suite B Grand Rapids, MI 49505	Drawing No <b>SKF</b>	P - 800.783.0910 P - 616.913.0060 F - 616.913.0085
Scale NTS	Revision	Drawn by: M McCormick